



MMFA

2023
ANNUAL REPORT



Above and cover: Nellie Mae Rowe (American, 1900–1982), *Fish Boat*, 1982, crayon, felt-tip pen, and graphite on paper, Gift of The Judith Alexander Foundation, 2023.2

Opposite: Young visitors enjoy a sweet treat at Flimp 2023.



Sustainability

The MMFA's Annual Report is printed on responsibly-sourced paper. The Museum prints locally—avoiding long haul transportation and reinvesting in the River Region community. If you do not plan on keeping your copy of the Annual Report, we ask that you please recycle it.



CONTENTS

FROM THE BOARD PRESIDENT	2
HIGHLIGHTS	
John Caddell	4
Babette Wampold	6
A Year in Learning + Programs	8
EXHIBITIONS + SPONSORS	10
ACQUISITIONS	14
BY THE NUMBERS	17
FINANCIAL INFORMATION	18
GOVERNANCE + STAFF	20
MEMBERSHIP	22
PHILANTHROPY	26
AFFINITY GROUPS	28

FROM THE BOARD PRESIDENT

In the galleries, studios, staff offices, ArtWorks, and the John and Joyce Caddell Sculpture Garden, we people of Montgomery, in our magnificent array of ages, hues, backgrounds, and interests, come together to offer our minds and hearts to whatever impact art will have on us—and to try making our own art. How will the prints, photographs, paintings, sculptures, glass, and ceramics speak to us? Will they enchant us with beauty or arrest us with a message? Will they tell us a story? Our story? Another's story? What does the person standing at the painting's other side see? Will we take the opportunity to talk and discover? In this space, we can choose to learn and grow into our better angels.

Art is the heart of the MMFA. In 2022–2023, so many devoted their hearts to this near-centenarian institution. On behalf of the Board of Directors, I wish to express heartfelt gratitude to staff members who, in the past year, left the Museum, and left it better off than when they arrived, and to staff members who remained here and whose resilience, determination, and scholarship maintained the excellence for which the MMFA is known. Recently, new staff members have arrived, and we welcome them!

Deepest gratitude is due to three individuals who helped to lead the MMFA in the last year: Director Angie Dodson, who guided deeper commitment to diversity, equity, and inclusion; Senior Curator Margaret Lynne Ausfeld, whose forty-three year history at the MMFA has honed her ability to manage many other aspects of Museum operations beyond her primary job; and our current Interim Director Al Head, whose years of leadership, experience, and expertise in the arts have helped steady the Museum and inspire faith in its bright future.

We are grateful to Mayor Steven Reed, Montgomery's City Council, the Montgomery County Commission, and the Alabama State Council on the Arts for their generous support; to our members and donors whose gifts build, preserve, sustain, exhibit, and help us to interpret our diverse collection and works of art from other museums from across the nation.

I always have believed that we citizens of Montgomery could show the rest of the world how to get along—because of *our differences*. This art-full, intimate space invites us, gathers us, contains us, connects us—to art, to those who create it and to all of us who behold it. In closing, I wish to thank our Vice President Bill Ford and our Board for their commitment of time, treasure, and talent to assure the future of the MMFA in perpetuity.



Laurie J. Weil, D.V.M.
Board President

Right: Visitors at the Whitney Museum of American Art view Edward Hopper's *New York Office*, on loan from the Montgomery Museum of Fine Arts' permanent collection, in the exhibition *Edward Hopper's New York*, which ran from October 19, 2022 through March 5, 2023. Photo credit: Stephen Hayes





JOHN CADDELL

MARCH 13, 1931–MARCH 27, 2023

From humble beginnings sanding floors for his father's refinishing business, John Caddell's remarkable intelligence and business talents were recognized and rewarded in a construction career that made him a major industry star on the international stage. After earning a Building Construction degree from Georgia Tech (named Alumni of the Year in 1998), he joined Blount Construction, where—mentored by Winton “Red” Blount—he soon rose through the ranks to become President and CEO, leading the company through its greatest period of growth and prosperity. When he left, Blount was at its apex as a major international contractor, performing some of the world's largest and most challenging projects.

“Red Blount was a generous mentor who had a passion for expanding his company and providing opportunities for people like me to grow both professionally and personally,” said John Caddell.

“I have since tried to lead with this same focus on constant growth and extending maximum opportunities to our employees. He also became my role model for giving back to the community.”

In 1983, John founded Caddell Construction, which has since become a multi-billion dollar company building commercial, government, civil, and industrial projects worldwide. Reflecting his devotion to family, Caddell Construction was a “family affair,” with his wife Joyce and all his children participating in key roles in the company's exceptional success. John Caddell was inducted into the Hall of Fame for both major construction industry organizations, the American Builders and Contractors (ABC) and the Associated General Contractors of America (AGC). He also received numerous other industry awards and recognition throughout his career.



Parallel to his business success was a devotion to community and giving back. John and Joyce Caddell, personally and through their foundation, have donated millions to various educational, humanitarian, cultural, and civic organizations. Their involvements have included the YMCA, the Montgomery Museum of Fine Arts' John and Joyce Caddell Sculpture Garden, the Montgomery Area Council on Aging, the Alabama Wildlife Federation, the American Cancer Society, the Alabama Shakespeare Festival, and Georgia Tech, to name a very few from a long list. Among numerous awards highlighting the Caddell's support of the arts were the 2010 Frank Memorial Arts Award and the 2022 Winton M. Blount Patrons of the Art Award. They also received The Rick Heinzman Memorial Meals on Wheel Award from MACOA, where meals are prepared in the Caddell Kitchen.

In John's words, "Joyce and I have always felt a strong obligation to give back to our community and to reach out to those who might need a helping hand. We have been so blessed and want to be a blessing to others. It's really that simple."

Above: John Caddell (center) with Board Past President Barrie Harmon (left) and Director Mark Johnson (right)..

Opposite: John and Joyce Caddell



BABETTE L. WAMPOLD

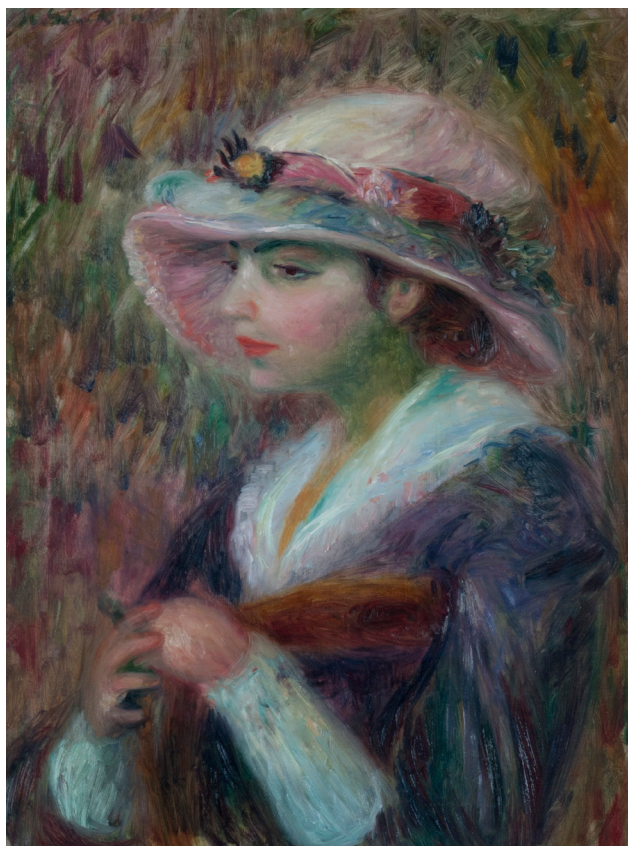
MAY 19, 1934–SEPTEMBER 9, 2023

Babette Wampold and her husband Charles (1925–2010) were connoisseurs and true believers in the power of American art. They collected antiques and American paintings on their travels, lived with them here in Montgomery, and left several dozen works of art to the Museum for its visitors to experience and appreciate. Babette grew up in Demopolis, Alabama, and met Charles while in school in New Orleans. They were married for over 50 years; he practiced law in Montgomery. For many of their decades together, a cornerstone of the Wampolds' civic involvement was contributing to the collections of the Montgomery Museum of Fine Arts. In addition to their gifts of art, Charles shared insights and passion through devoted service on the MMFA's Acquisitions Committee.

Beginning in the early eighties and continuing through the late oughts, the Wampolds gave

a range of late 19th- and early 20th-century American paintings. After Charles' death, as they had planned, Babette continued to donate works of art to the Museum in his honor. The Wampold Collection includes expressive and lyrical works, landscapes and realistic views of American life, solitary figures and groups. It contains pieces by artists working in and depicting various locales from central Alabama to Europe. The couple's favorite artists included Charles Burchfield, Mark Fisher, and William Gropper. They donated several examples of works by each of them to the collection.

Additionally, the collection contains powerful works related to both Judaism and Christianity. It is notable that in our deeply religious country, we often focus on secular subjects in art. Charles and Babette were active leaders of Temple Beth Or and the Jewish community. And she was an advocate



for Refuseniks—persecuted Jews and Christians who sought to leave the Soviet Union. Rabbi Scott Looper, who celebrated and memorialized Babette’s life, shared his personal love of the paintings she and Charles gave to MMFA.

Along with other patrons of the Museum, the Wampolds contributed towards the purchase of several well-loved paintings, including Gary Chapman’s *Mutter und Tochter*, seen above. It features a strong individual and mother—a fitting image for Babette, defined by her bravery and love of family.

Through these gifts, perhaps there is a window into the depth of meaning in their gift of art to us. Imagine a teenager writing about how they relate to the way a subject feels in a work of art, a grandmother and child strolling through the galleries and recreating the poses in a painting, or a member of staff learning from the original historical documents and stories of the fine American paintings they have access to. While

Babette offered enlightening and charming talks to the public and the Collectors Society the last time the works were all displayed together, the Wampolds often let the work speak for itself, and so it will for generations to come.

For those interested in seeing their gifts in their entirety or telling members of the family what the works mean to you, an exhibition is being organized for the spring of 2025, the centennial of Charles Wampold’s birth.

Left: William Glackens (American, 1870–1938), *Head of Pauline*, about 1915, oil on canvas, Montgomery Museum of Fine Arts, Gift of Babette L. Wampold in memory of Charles H. Wampold, 2013.15

Right: Gary Chapman (American, born 1961), *Mutter und Tochter*, 1993, oil on linen, Montgomery Museum of Fine Arts Association Purchase and Gift of Ellie and Fred Ernst and Babette L. and Charles H. Wampold and Museum Docents, 1997.4a

Opposite: Charles and Babette Wampold with their daughters, Carolyn and Jerre Lynne, at the opening of the 2010 exhibition, *Adventures in Collecting Art: American Paintings from the Collections of Charles and Babette Wampold at the Montgomery Museum of Fine Arts.*



A YEAR IN LEARNING + PROGRAMS

Through programs, events, studio classes, gallery talks, summer camps, community outreach events, and more, the Learning and Programs department worked to make MMFA more accessible and welcoming to all our visitors. We are a small but mighty department committed to improving our community and sharing the assets of this institution with our community. The highlights shared below are a glimpse into a meaningful year of change and the continued evolution of our Museum programs.

In 2023, MMFA staff completed the Kulture City Sensory Inclusive training and added accessibility offers for our visitors. Kulture City sensory bags—which include noise-canceling headphones, fidgets, and weighted lap pads—are available to visitors who have sensory needs or processing issues. In September, we added Enchroma color-blind glasses to aid guests who experience colorblindness. Both the Kulture City sensory bags and Enchroma glasses are available to visitors and can be checked out at our welcome desk at no charge. Additionally, we added more Visitor Service Representatives to the L+P department to support visitors and ensure their museum experience is exceptional. All Visitor Services and L+P staff completed the Disney Institute Quality Services training, which consisted of a six-hour session that covered service, hospitality, and how to better serve visitors and the public while also supporting an institution's mission and purpose.

We continue to nurture community partnerships and build new relationships throughout the River Region. On April 1, we partnered with Autism Support of Alabama and D.A.T.S.M.O.M. (Disability as an Ability Toward Success: Moms on the Move) for our Arts for Autism program that served over 50 families. On May 4, the Art After 5: Plant & Play event inspired by Ginny Ruffner's *Reforestation of the Imagination*, brought together live music from Think All Be All, mural painting with Sky ReVera, a planting activity with Eat South, regional farming information from Legacy, food from Plant Bae, and featured beverages from Common Bond Brewery for a beautiful evening in the Sculpture Garden. On August 26, the Museum hosted four Korean artists who led a Korean Knots workshop sponsored by AKEEP (Alabama-Korea Education and Economic Partnership). Participants were guided through the intricate and beautiful artistry of tying silk cords into detailed knots.

We also continued to support our mission of nurturing and instructing artists of all ages with studio classes taught by local artists Alisa Beck, Tara Sartorius, Ward Chesser, Laura Bocquin, Sara Wright, Will Jacks, and Sara Dismukes. This year, we added opportunities to learn from the artists featured in special exhibitions, like Debra Eubanks Riffe, Ke Francis, and Jamele Wright, Sr. These studio classes filled quickly and often had waitlists with enthusiastic participants. When it was financially feasible, we waived registration

fees or offered free programs using grant funds. Our Summer Camps for youth and teens were also a huge success, led by passionate artists and educators like Tiiwon Siaway, Sara Crocker, DaNeal Eberly, Sarah Tanner, and Winfred Hawkins.

We celebrated record-breaking attendance at our three large annual events: Flimp, Juneteenth, and Fall Festival.

The Flimp Festival is a free, annual Spring event dedicated to stirring the creative spirit in all of us. This year, almost 1,800 visitors joined us for artmaking activities, artist demonstrations, and performances all while igniting their imagination and encouraging play. In addition to viewing the Museum's exhibitions, visitors were invited to create alongside demonstrating artists Tara Cady Sartorius, Sara Crocker, Janice Dennis, and Laura Murray while they shared their artistic process as they created artwork. Music filled the garden with performances from MEOW Academy, DJ Money Mike, and Electric Blue Yonder. Each year, the Flimp Festival creates unique, fun, and engaging activities for young visitors and their families.

Please join us for Flimp Festival 2024 on Saturday, April 13, 2024.

On Saturday, June 17, we kicked off the Juneteenth weekend of celebration at the gates of Caddell Sculpture Garden with a Second Line-style parade led by the G.W. Carver High School band. Visitors waved flags and umbrellas as they joined in the procession with noisemakers and fans. Following the parade, visitors created celebratory tambourines and Juneteenth flags while enjoying live music from Jonathan Michael and delicious snacks from Verde Cafe. EL Chisolm, the featured artist based in Atlanta, GA, revealed her completed mural. Inside the Museum, artworks from the Teen Art and Activism Camp and Valiant Cross Academy were on view in the new Studio Hub. The following day, the Mayor's Young Professional Council hosted a Father's Day Brunch for 150 visitors to join together in fellowship and community building. **We hope to see you on June 15 for our Juneteenth 2024 Celebration.**

The first annual Fall Festival spanned two days, September 23 to 24, and was the first event that combined our annual event, Artist Market, with a



celebration of all things "the Arts" in Montgomery and its surrounding communities. The event was kicked off with the Chalk Festival on the sidewalk leading up to the Museum, with 30 teams of K12 students, preschoolers, adults, and featured artist Sunny Paulk filling their spaces with bright and colorful chalk art inspired by the exhibition *Alabama A to Z*. The event had local food trucks and vendors on site, including Common Bond, Plant Bae, Funky Forte, Woody's Italian Ice, Fork in the Road, and The Pastry Vault. Visitors interacted with artists sharing their talents around the Garden and creative groups like Walk with Amal, Alabama Autism Support, and Alabama Shakespeare Festival, as well as listened to music from Village Green Records and Baldwin Magnet Music. On Saturday, *Alabama A to Z* artists shared their work in the exhibition while the Alabama Craft Guild ran demos in the Education Courtyard. Over 30 artists sold their work in Lowder Gallery and the Education Courtyard, and the Fall Festival had a special treat on Sunday: the Montgomery Zoo brought out their own Animal Ambassadors to create art with the public's young and young-at-heart visitors. A staggering crowd of 2,600+ visitors made the first-time event a huge success, and we look forward to **Fall Festival 2024 on September 21-22, 2024.**

Above: Montgomery Craft Guild artists hosted demos at Fall Festival.

Opposite: Visitors to ArtWorks use their brains in creative problem-solving activities.



EXHIBITIONS + SPONSORS

CHANGING EXHIBITIONS

BOUNDLESS

November 25, 2022 through February 26, 2023

This exhibition is funded, in part, by lead sponsors Mr. and Mrs. Barrie H. Harmon III and a grant from South Arts in partnership with the National Endowment for the Arts and the Alabama State Council on the Arts.

KE FRANCIS: DUE SOUTH

December 2, 2022 through February 19, 2023

GINNY RUFFNER:

REFORESTATION OF THE IMAGINATION

March 17 through June 11, 2023

This exhibition is organized by the Renwick Gallery of the Smithsonian American Art Museum.

Generous support for this exhibition has been provided by Art Bridges, the Smithsonian American Women's History Initiative, Elizabeth and James Eisenstein, Ed and Kathy Fries, Shelby and Frederick Gans, James Renwick Alliance, Colleen and John Kotelly, Betty and Whitney MacMillan, Jacqueline B. Mars, Kim and Jon Shirley Foundation, and Myra and Harold Weiss. The C. F. Foundation in Atlanta supports the museum's traveling exhibition program, *Treasures to Go*.

THE MODERN MATRIX:

PRINTS FROM THE MMFA COLLECTION

March 17 through June 11, 2023

Annual support for exhibitions was made possible by the following sponsors and grantors. Lead sponsors and grantors Alabama State Council on the Arts, Alabama Power Foundation, The Ford Foundation, Mr. and Mrs. Barrie H. Harmon III, Lamar, Medical Properties Trust, Inc., MGMWERX, Poarch Band of Creek Indians, Regions Bank, and Rheem Manufacturing, with additional support from sponsors Dr. and Mrs. Mark H. LeQuire, PowerSouth, The S. Adam Schloss Foundation, Mr. and Mrs. Ken Williams, and Laurie J. Weil, D.V.M. and Dr. Tommy Wool, and co-sponsors AmeriFirst Bank, Balch & Bingham, LLP, Barganier Davis Williams Architects Associated, AIA, Captrust, Nick Drollette Photography, Ms. Camille Elebash-Hill, Mrs. Ann Hubbert, Jernigan & Jernigan, LLC, Morgan Stanley Wealth Management, Mr. and Mrs. L. Daniel Morris, Jr., Harmon Dennis Bradshaw, Inc., Dr. and Mrs. Alfred J. Newman, Jr., River Bank & Trust, Russell Construction of Alabama, Inc., Ms. Micki Beth Stiller, Valley Bank, and Warren Averett, LLC.

SPOTLIGHT: YVONNE WELLS

March 23 through June 4, 2023

Spotlight is a series of American art exhibitions created through a multi-year, multi-institutional partnership formed by the Wadsworth Atheneum Museum of Art as part of the Art Bridges Cohort Program.

WILLIAM BERRA: A LUMINIST'S VISION

March 31 through July 9, 2023

All exhibitions organized by the Montgomery Museum of Fine Arts unless otherwise noted.

Above: Photograph of the 2022 installation of the exhibition *BOUNDLESS* at the Montgomery Museum of Fine Arts, Montgomery, Alabama

Opposite: Photograph of the 2023 installation of the exhibition *Ginny Ruffner: Reforestation of the Imagination* at the Montgomery Museum of Fine Arts, Montgomery, Alabama

THE BIAS INSIDE US

June 3 through July 2, 2023

Organized by the Smithsonian Institution Traveling Exhibition Service (SITES).

Major support for *The Bias Inside Us* is provided by the Otto Bremer Trust. Additional support provided by Acton Family Giving, Anonymous donors, the Beverly Foundation, Steve and Sheri Lear, Target, the Margaret A. Cargill Foundation Fund of the Minneapolis Foundation, Thomson Reuters, Allianz of America, Valerie E. and William A. Anders, Julie and David Burton, the Dreier Family, Lennart Ehn and Ginger Lew, Expedia, Trevor and Melissa Fetter, the Roger S. Firestone Foundation, Brenda J. Gaines, Myra Hart and Kent Hewitt, Charlie and Nancy Hogan, Dr. Christine C. Jenkins and Mr. Pierre A. France, KNOCK, inc., Sarah Laver and Frank Guanco, Kathleen Mason, Elyse Rabinowitz and Jim Porter, Dr. Philip S. and Alice Hoolihan Randall, Gloria del C. Rodriguez, and the Family of Leona Roen, and Naoma Tate.

Based on an original concept developed by Tolerance in Motion: Steve Lear, Laura Zelle, and Elyse Rabinowitz, founders; Ellen Glatstein, Laura Lipshutz, Alice Randall, Joanne Jones-Rizzi, and Susan Shapiro, directors; Don Shelby, founding advisor; and the Jewish Community Relations Council of Minnesota and the Dakotas, Steve Hunegs, executive director.

Local support for this exhibition was provided, in part, by the Mayor's Young Professional Council.

ALABAMA A TO Z: 45TH MONTGOMERY ART GUILD MUSEUM EXHIBITION

June 30 through September 24, 2023

Organized by the Montgomery Museum of Fine Arts in partnership with the Montgomery Art Guild.

WHO WILL KEEP THE MEMORIES: DEBRA EUBANKS RIFFE, MONTGOMERY ART GUILD FEATURED ARTIST

June 30 through September 24, 2023

Organized by the Montgomery Museum of Fine Arts in partnership with the Montgomery Art Guild.

Support provided by Dan Harris, Montgomery County Commission and the generous sponsors of artist awards.

SPOTLIGHT: DUSTI BONGÉ

July 13 through October 22, 2023

Spotlight is a series of American art exhibitions created through a multi-year, multi-institutional partnership formed by the Wadsworth Atheneum Museum of Art as part of the Art Bridges Cohort Program.





PERMANENT COLLECTION EXHIBITIONS

WILLIAM HOGARTH: MORALITY TALES

November 4, 2022 through February 12, 2023

Support for this exhibition was provided in part by a grant from the Alabama State Council on the Arts.

HUGH WILLIAMS: DRAWINGS

December 14, 2022 through March 26, 2023

Support for this exhibition was provided by co-sponsors Captrust; Mr. and Mrs. L. Daniel Morris, Jr.; and Dr. and Mrs. Alfred J. Newman, Jr.

FIGURATIVE "REAL"ITY

February 1 through March 19, 2023

Support for this exhibition was provided in part by a grant from the Alabama State Council on the Arts.

ART: INVENTION: WORKS BY SELF-TAUGHT ARTISTS FROM THE PERMANENT COLLECTION

February 24, 2023 through February 4, 2024

Support for this exhibition was provided in part by a grant from the Alabama State Council on the Arts.

THE EMBODIMENT OF FORM: THE FIGURE IN ART

March 17 through June 4, 2023

Support for this exhibition was provided in part by a grant from the Alabama State Council on the Arts.

BREAKING BARRIERS: ARTFULLY ABLE

March 23 through July 30, 2023

Support for this exhibition was provided in part by a grant from the Alabama State Council on the Arts.

VISIONS OF VENICE

June 30 through September 17, 2023

Support for this exhibition was provided in part by a grant from the Alabama State Council on the Arts.

SQUARE OFF

July 14 through October 22, 2023

Support for this exhibition was provided in part by a grant from the Alabama State Council on the Arts.

ALTERNATIVE ABSTRACTIONS

July 27 through October 15, 2023

Support for this exhibition was provided in part by the Alabama State Council on the Arts.

All exhibitions organized by the Montgomery Museum of Fine Arts unless otherwise noted.

Above: Installation photograph of the exhibition, *Alabama: A to Z*, at the Montgomery Museum of Fine Arts.

TEMPORARY GARDEN INSTALLATIONS

BLACK TRACTOR PROJECT

October 31, 2022 through April 2024

Bernard Williams (American, born 1964), *Black Tractor Project*, 2020, EPS Foam, polyurethane, wood, steel, paint, and sound elements, Lent by the artist

Support for this installation was provided by lead sponsor Mr. and Mrs. Barrie H. Harmon III.

TRANSFER #2

August 7, 2023 through August 2026

Jamele Wright, Sr. (American, born 1970), *TRANSFER #2*, 2023, acrylic panels and steel pipe, Lent by the artist

ARTWORKS GALLERY + STUDIO HUB EXHIBITIONS

BEYOND THE WALL

November 26, 2022 through February 26, 2023

Inspired by *BOUNDLESS*

FANTASTICAL FLORA

March 4 through May 26, 2023

Inspired by Ginny Ruffner:
Reforestation of the Imagination

FACES OF AUTISM

May 9 through May 26, 2023

In partnership with Disability as an Ability Toward Success: Moms on the Move (D.A.T.S.M.O.M.) and Braxton Barker

LEARNING THROUGH ART

May 1 through May 26, 2023

Learning Through Art Educational Program. Support for this program was provided in part by a grant from the Daniel Foundation of Alabama.

HELEN KELLER ART EXHIBITION

May 9 through May 26, 2023

In partnership with Montgomery Public Schools

ALL THINGS ALABAMA

June 3 through August 20, 2023

Inspired by *Alabama A to Z*

ARTWORK BY VALIANT CROSS ACADEMY

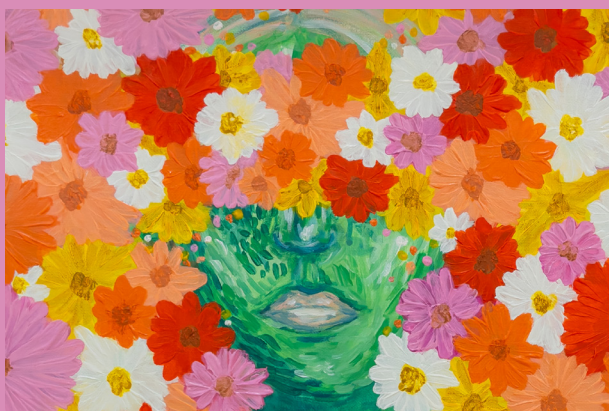
June 15 through August 20, 2023

In partnership with Valiant Cross Academy

ARTIST AND EDUCATOR

August 26 through October 8, 2023

Inspired by *Alabama A to Z*



Above: Student artwork from *Beyond the Wall* and *Fantastical Flora*.



ACQUISITIONS

Thornton Dial, Sr.

(American, 1928–2016)

The Faith in the Eagle (Dollar), 1991

Watercolor and pastel on paper

Gift of Micki Beth Stiller, 2022.8

Taj Matumbi

(American, born 1994)

Clown Ville, 2023

Acrylic and acrylic on cardboard collage on canvas

Montgomery Museum of Fine Arts Association Purchase, 2023.1.1

Featured to the left

Scene Change, 2023

Acrylic on canvas

Montgomery Museum of Fine Arts Association Purchase, 2023.1.2

Nellie Mae Rowe

(American, 1900–1982)

Fish Boat, 1982

Crayon, felt-tip pen, and graphite on paper

Gift of The Judith Alexander Foundation, 2023.2

Featured on the cover

Madison Ke Francis

(American, born 1945)

The Leonardo Syndrome, 2022

Artist book

Gift of the artist, 2023.3.1

Red Boot, 2019

Artist book

Gift of the artist, 2023.3.2

Frank Fleming

(American, 1940–2018)

Bird in Hand, 1987

Glazed porcelain

Gift of Mr. and Mrs. W. G. Schuetzenduebel, 2023.4

Fred Webster

(American, 1911–1998)

All-American Placekicker, 1992

Acrylic on wood

Gift of Micki Beth Stiller, 2023.5

Morris Atkinson Blackburn

(American, 1902–1979)

Figure, 1940

Screen print on paper

Gift of the Herbert D. Halpern Collection, New Orleans, Louisiana, 2023.6.1

Federico Castellón

(American, born Spain, 1914–1971)

The Groom, 1947

Lithograph on paper

Gift of the Herbert D. Halpern Collection, New Orleans, Louisiana, 2023.6.2

Robert Gwathmey

(American, 1903–1988)

Sharecropper, 1969

Lithograph on paper

Gift of the Herbert D. Halpern Collection, New Orleans, Louisiana, 2023.6.3

Richard Lindner

(American, born Germany, 1901–1978)

Salute, 1964

Lithograph on paper

Gift of the Herbert D. Halpern Collection, New Orleans, Louisiana, 2023.6.4

Joseph Vogel

(American, born Poland, 1911–1995)

Lament, about 1934–1938

Lithograph on paper

Gift of the Herbert D. Halpern Collection, New Orleans, Louisiana, 2023.6.5

Henri Le Sidaner

(French, 1862–1939)

Street in Eu (La Rue, Eu), 1912

Oil on canvas

Gift of Mary Ethel and Charles Gross, 2023.7



Organized by accession number.



BY THE NUMBERS

VISITORS

Total visitor attendance	43,721
Visitors to ArtWorks ¹	25,334
Annual events attendance	10,077
Highest daily attendance:	
Saturday, April 15, 2023 (Flimp Festival)	1,797
Highest non-event attendance:	
Sunday, May 21, 2023	596

PERSONNEL

City of Montgomery staff	26
MMFA Association staff	1
Docents	20
Volunteers	110
Interns	5
Volunteer and docent hours	1,320
Docents	717
Muses	265
Volunteers	338
Conference attendance by staff	3

COMMUNICATIONS

Total online page views	192,717
Unique online visitors	71,735
Social media network followers ¹	15,086
Total email subscriber base	2,822

CURATORIAL

Works in the collection	4,277
Works conserved	3
Works part of outgoing loans/exhibitions	17
Works part of in-house exhibitions	177
Changing exhibitions	12
Collection based exhibitions	9
ArtWorks Gallery exhibitions	8
New acquisitions from funds	2
New acquisitions from bequests/donations	12
Total collections website page views	52,998
Total collections website users	6,104

DEVELOPMENT

Membership	
Members	511
New members	68

Member Events

Dabble in Travel Series attendees	33
-----------------------------------	----

Facility Rentals

Total private event attendance	1,819
Private events held indoors	46
Private events held in the Caddell Sculpture Garden	6
Wilson Auditorium performances	28

LEARNING + PROGRAMS

ArtWorks Community Gallery

Student works exhibited	455
Adult works exhibited	14
Schools represented	31

Programming

Youth and family program attendance	4,054
Teen program attendance	59
Muses teen council members	23
Adult program attendance	5,513
Offsite attendance ²	383

Tours

Montgomery Public School (MPS) students ³	573
Other Montgomery students ⁴	514
Non-local students	363
Adult group participants	434

Opposite: Photograph of young visitors making art at the 2023 Juneteenth celebration.

² Includes outreach, offsite ArtTalk, and the Exhibition on Screen film series at the Capri Theatre attendees.

³ MMFA provides tours to all MPS 5th grade students system-wide. This number also includes tours for all other MPS students.

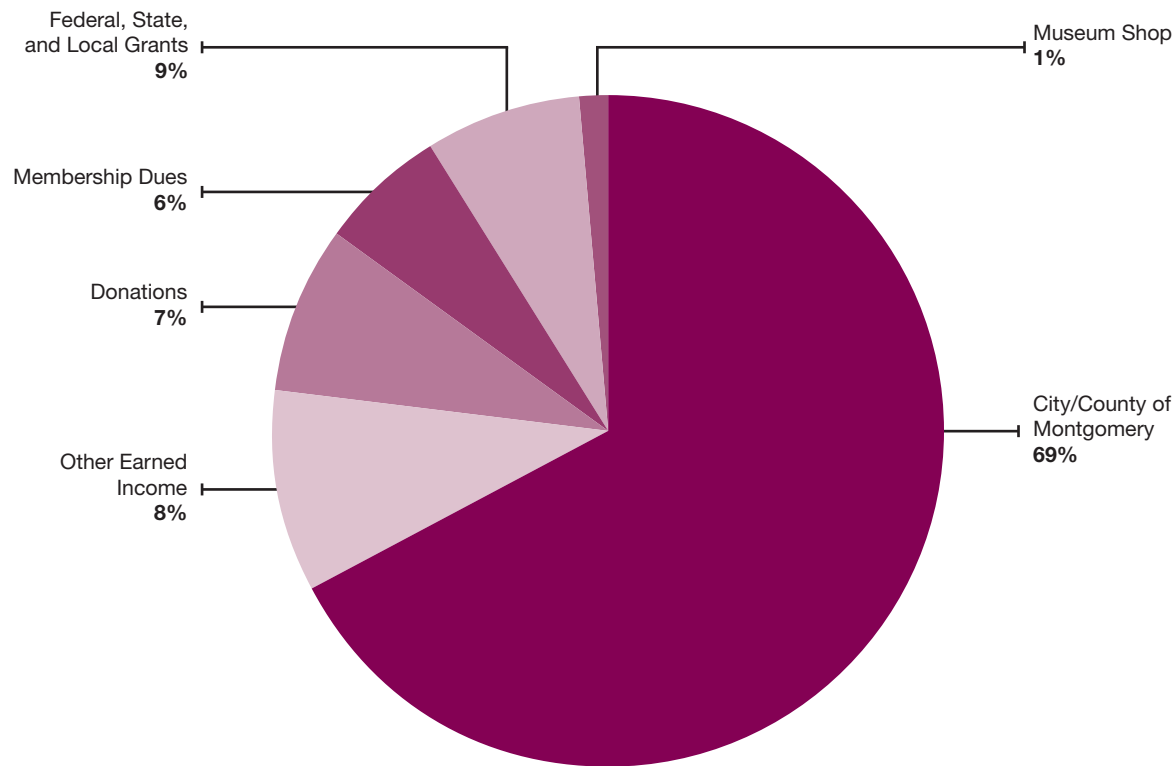
⁴ Includes homeschool and private school students.

¹ Includes Instagram, Facebook, and Twitter sites.

FINANCIAL INFORMATION

(For the fiscal year beginning October 1, 2022
through September 30, 2023)

FY 2023 OPERATING REVENUE + SUPPORT



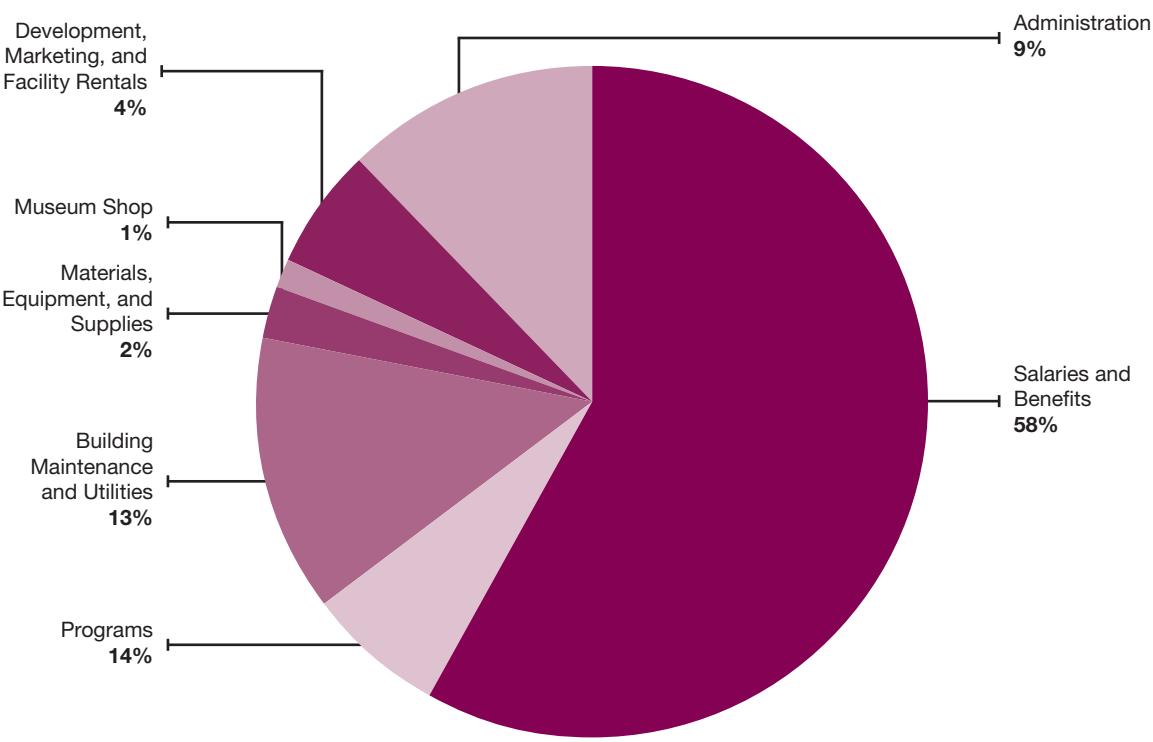
FY 2023 Revenue + Support

City/County of Montgomery	\$ 3,182,366
Other Earned Income	372,278
Donations	334,257
Membership Dues	256,505
Federal, State, and Local Grants	437,014
Museum Shop	59,020
Total Operating Revenue	\$ 4,641,440

FY 2023 Expenses

Salaries and Benefits	\$ 2,599,917
Programs	653,219
Building Maintenance and Utilities	592,086
Materials, Equipment, and Supplies	75,348
Museum Shop	46,461
Development, Marketing, and Facility Rentals	160,752
Administration	390,108
Total Operating Expenses	\$ 4,517,891

FY 2023 OPERATING EXPENSES



Thank You

The Montgomery Museum of Fine Arts, a department of the city of Montgomery, is supported by funds from the City/County of Montgomery; the Montgomery Museum of Fine Arts Association; federal, state, and local grantors; membership fees; and private donations.

Programs are made possible, in part, by grants from the Alabama State Council on the Arts, Art Bridges, and the Ford Foundation.

Note

Numbers are rounded to the nearest dollar or percentage point.

A final audited report of the year’s financial statistics may be obtained upon request from the Museum’s Finance Department.

GOVERNANCE

BOARD OF TRUSTEES

OFFICERS

Laurie J. Weil, D.V.M.
President
William (Bill) Ford
Vice President
Jason Westbrook
Treasurer
Pete Knight
Secretary
Cathy R. Martin
Immediate Past President

ASSOCIATION ELECTED TRUSTEES

Charlsey “Chuck” Adkins-
Wills
Barrett Austin
Sheila Austin
Edwin C. Bridges
Dr. Myrtle Goore
Meesoon Han
Mike Hart
Octavius Jackson
Michael Keith Jordan
Sheron Rose
Bob Runkle
Dee Russell
Steve Russell
Kathy Sawyer
Mark Snead
Griffith Waller
Janet Waller

ASSOCIATION APPOINTED TRUSTEES

Sondra Rhoades Johnson
Gage LeQuire
Holly C. McCorkle
Derryn Moten
Allison Muhlendorf

MONTGOMERY CITY COUNCIL APPOINTED TRUSTEES

Vacant
District 1
Chintia Kirana
District 2
Demonica Pugh
District 3
Natalie Wright
District 4
Brandon Barker
District 5
Kelli Gavin
District 6
Lucy Jackson
District 7
Laurie J. Weil, D.V.M.
District 8
Susan Price
District 9

PAST PRESIDENTS

May Powers Houghton*
1930–1942
Walter B. Jones*
1942–1944
Pauline Smith Crenshaw*
1944–1953
Mary Houghton Smith*
1954–1956
Eleanor Houghton
McLemore*
1956–1961
Esther Reynolds Mahoney*
1961–1964
Foy Gilmore Goodwyn*
1964–1967
Frederick Gunster*
1967–1970
Douglas G. Jackson*
1970–1973
Virginia Loeb Weil*
1973–1976
Valerie Wilkerson
1976–1978
James L. Sabel*
1978–1980
Philip T. Murkett, Jr.
1980–1982
Elizabeth “Betty” Robison*
1982–1984

D. Phillips Carr*
1984–1985
James M. Scott
1985–1986
Laura C. Lockett
1986–1988
Peggy M. Mussafer
1988–1990
Caroline B. Novak
1990–1992
John Walter Stowers*
1992–1994
Winnie Stakely
1994–1996
Camille Elebash-Hill
1996–1998
Philip A. Sellers*
1998–2000
Carl Barker
2000–2002
Margaret Lowder
2002–2004
Laurie J. Weil, D.V.M.
2004–2006
Gordon Martin
2006–2008
Patricia Pinchback
2008–2010
Polly Hardegree
2010–2012
Barrie H. Harmon, III
2012–2014
Roger Spain
2014–2016
Leslie Sanders
2016–2018
Pete Knight
2018–2020

STAFF

ADMINISTRATION

Angie Dodson
Director
Janet Carroll
*Head of Association
Finance*
Brandy Morrison
Museum Assistant

COMMUNICATIONS

Stephen Hayes
Head of Communications

CURATORIAL

Margaret Lynne Ausfeld
Senior Curator
Jennifer Jankauskas
Curator
Savannah Shaon
*IMLS Museum Empowered
Fellow*
Pam Bransford
Registrar
Sarah Elizabeth Kelly
Assistant Registrar
Brad Echols
Preparator/Designer
Christen Napp
Assistant Preparator
Emily Sears
Curatorial Assistant

DEVELOPMENT

Tisha Rhodes
Director of Development
Kecia Kelso
Development Officer
Cassandra Grimes
DEAI and Grants Manager
Aaron Ganey
Special Events Coordinator

LEARNING AND PROGRAMS

Emily Thomas
*Head of Learning
and Programs*
Elisabeth Palmer
*Manager of Student and
Teacher Programs*
Sarah Graves, Ph.D.
*Manager of Visitor
Engagement*
Genesis Ranel
*IMLS Museum Empowered
Fellow*

* Deceased

Information as of September 30, 2023. Past Presidents may continue to serve on the Board of Trustees.

VISITOR SERVICES REPRESENTATIVES

Deborah Black
Donovan Brock
Ward Chesser
Jordan Clayton
SaQuia Evans
Erice Furr
Aiyana Hawkins
Grayson McDaniel
Christina Novello
Sharon Ritter
Camden Thornton

OPERATIONS

India Wilson
Head of Operations
Critis Frasier
*Operations Administrative
Assistant*
Chad Meredith
*Building Maintenance
Supervisor*
Dion Williams
Labor Foreman
Douglas Beachem
Service Maintenance Staff
DeJunaye Moncrief
Service Maintenance Staff
Ken Nielsen
Chief of Security

SECURITY OFFICERS

Ryan Baugh
Ritchie Burdette
Eladio Carvajales
Ketta Carter
Greg Faulkner
David Ford
Christine Hall
Charles Harris, Jr.
Scott Kennedy
Dwayne Lacy
Rickie Posey
Wilma Robinson

INTERNS

CURATORIAL

MacKenzie Meade

LEARNING AND PROGRAMS

Lila Banach
Donovan Brock



Above: Preparator Christen Napp works with artist Ashley V. Blalock to install *Keeping Up Appearances* (2022).

Special thanks to Regions and Poarch Band of Creek Indians for supporting the MMFA's internship program. Their support allows the Museum to offer paid internships to River Region students.

MEMBERSHIP

DIRECTOR'S CIRCLE

\$25,000 + SUSTAINING GUARANTOR

Mr. and Mrs. Barrie H.
Harmon III
Mrs. Helen Till

\$24,999 – 10,000 GUARANTOR

Ms. Caroline Crook

\$9,999 – \$5,000 DISTINGUISHED BENEFACTOR

Mr. Owen Aronov
Ms. Margaret Lynne Ausfeld
Dr. Melanie Halvorson and
Mr. Carl Barker
Dr. and Mrs. Patrick Budny
Ms. Cathy Caddell and Mr.
Charlie Warnke
Mr. John A. Cadell
Mr. and Mrs. C. Lee Ellis
Mr. and Mrs. Robert B.
Geddie, Jr.
Drs. Gerri and Stuart Hendon
Mr. and Mrs. Ray Ingram
Mr. and Mrs. John E. Ives
Dr. and Mrs. Mark H. LeQuire
Mr. and Mrs. James K.
Lowder
Mr. and Mrs. Robert Runkle
Mr. S. Adam Schloss
Mr. and Mrs. Charles A.
Stakely
Mr. and Mrs. Todd Strange
Mr. and Ms. Peter Till
Mr. and Mrs. Adolph Weil III
Laurie Jean Weil, D.V.M. and
Dr. Tommy Wool
Mrs. Helen Wells
Mr. and Mrs. Ken Williams

\$4,999 – \$2,500 MAJOR BENEFACTOR

Mr. and Mrs. Sam Adams
Dr. and Mrs. Sanders M.
Benkwith
Mr. and Mrs. Marvin H.
Campbell II
Dr. Robert M. Combs
Dr. and Mrs. Benjamin J.
Cumbus
Dr. and Mrs. Stephen L.
Davidson
Mrs. Camille Elebash-Hill

Mr. Bruce Freitas
The Honorable and Mrs.
Truman M. Hobbs, Jr.
Mrs. Ann Hubbert
Mr. and Mrs. Rhon Jones
Mr. and Mrs. Hans Luquire
Mr. and Mrs. L. Daniel
Morris, Jr.
Mr. and Mrs. Maurice
Mussafer
Carolyn and Dr. Alfred J.
Newman, Jr.
Ms. Mary Lil Owens and Mr.
William D. Little
Mr. and Mrs. Bruce S. Reid
Dr. and Mrs. J. Douglas
Robertson
Mr. and Mrs. Steve Russell
Mrs. Leslie Sanders
Mr. James M. Scott
Mr. and Mrs. Nelson F.
Smith, Jr.
Ms. Micki Beth Stiller
Mr. and Mrs. Vernon Taylor

\$2,499 – \$1,250 BENEFACTOR

Judge and Mrs. Harold W.
Harold Albritton III
Mr. and Mrs. Gregory B.
Alford
Dr. and Mrs. Winston M.
Ashurst
Mr. and Mrs. Barrett Austin
Ms. Sheila M. Austin
Mr. and Mrs. Bowen Ballard
Mrs. Jane Barganier
Mr. and Mrs. K.C. Belt
Mr. and Mrs. Frederick M.
Blackmon
Mr. Young J. Boozer III
Mr. and Mrs. Cedric Bradford
Mr. and Mrs. Richard
Bradford
Dr. and Mrs. William M.
Bridger
Dr. and Mrs. Arthur Britton
Mrs. Dorothy D. Cameron
Mr. and Mrs. Brooks L. Darby
Ms. Angie Dodson
Mr. and Mrs. Johnny F. Dunn
Mr. Jeff Dutton
Dr. Michael Fitzsimmons
Dr. and Mrs. R.M. Garrard, Jr.
Mr. and Mrs. Richard. H. Gill

Dr. Myrtle Gore and Mr.
Milton Davis
Mr. and Mrs. Jack A.
Hanchrow
Mr. and Mrs. Don Hardegree
Mr. and Mrs. Alex L.
Holtsford, Jr.
Mr. and Mrs. James W.
Jackson, Jr.
Mr. and Mrs. Charles W.
Jinright, Jr.
Mr. and Mrs. Charles S.
Johnson III
Dr. and Mrs. Henry Johnson
Mr. and Mrs. Frank M.
Johnston
Mr. and Mrs. Thomas H.
Keene
Mr. and Mrs. James E.
Klingler
Mr. and Mrs. Pete R.
Knight Jr.
Ms. Barbara Larson
Mr. and Mrs. James L.
Loeb Jr.
Cathy R. and Samuel P.
Martin
The Honorable and Mrs.
Reese McKinney
Mr. and Mrs. Jimmy
McLemore
Janet S. McQueen
Mr. and Mrs. Joseph
Mussafer
Mr. and Mrs. Tabor R.
Novak, Jr.
Mr. and Mrs. Lawrence
Oakley
Mr. and Mrs. Robert L.
Passmore
Ms. Mary Patrenos
Ms. Susan Price
Mr. and Mrs. Phillip O.
Rawlings
Judge Brooke Reid and
Mr. Phelps Reid
Mr. and Mrs. Jason Rhodes
Ms. Sheron Rose
Mr. and Mrs. Alan Rothfeder
Mrs. Burke Schloss
Mr. and Mrs. Robert E.
Seibels III
Dr. and Mrs. Davis D.
Thornbury
Mr. and Mrs. Kendall Weaver
Dr. and Mrs. Terry D. Williams

Mr. and Mrs. William A.
Williamson, Jr.
Justice Kelli Wise and Judge
Arthur Ray
Mr. and Mrs. Sam Wooten
Mr. and Mrs. Robert H.
Young, Jr.

MEMBERS

\$1,249 – \$500 ADVOCATE

Mrs. Janet Burns
The Honorable and
Mrs. Edward E. Carnes
Mr. and Mrs. Philip V. Festoso
Mr. and Mrs. William F. Furr
Dr. and Mrs. Scott Harris
Ms. Ellen Mertins
Mr. Richard L. Norris
Mr. and Mrs. Donald Rickard
Mr. and Mrs. B. Stephen
Schloss
Ms. Valerie Wilkerson
Mr. and Mrs. Monnie Wills

\$499 – \$250 SUPPORTER

Mr. and Mrs. John N.
Albritton, Jr.
Mr. and Mrs. Jere L. Beasley
Mr. Tyler Bell and Ms. Sara
Philpott
Col. and Mrs. Jeffrey C.
Benton
Ms. Ethel D. Boykin
Mr. and Mrs. Phillip F. Brown
Mr. and Mrs. G. Barton Crum
Dr. and Mrs. George Demuth
Mr. and Mrs. Charles C.
DiLaura
Mr. Rick Dildine and Mr.
Stephen Hayes
Mrs. Marguerite Edwards
Mr. Joe Germany
Mr. and Mrs. Wade Gober
Dr. Michelle and Mr. Philip
Goodwyn
Mr. and Mrs. Jack Graham
Mr. William Gregory
Ms. Marlene Harrington
Mr. and Mrs. Louis F.
Ialacci, Jr.
Mr. and Mrs. Ray Jacoby
Ms. Clare Johnson



Mrs. Anne King
 Mr. and Mrs. Joe H. Lanoux
 Mr. and Mrs. John D. Majors
 Mr. and Mrs. G. Scott Morris
 Ms. Svetlana Nelson
 Dr. Ward Newcomb and
 Mrs. Lisa Newcomb
 Mr. and Mrs. Donald E. Norris
 Ms. Alice Novak and
 Mr. David Carter
 Mr. and Mrs. Jonathan Payne
 Judge and Mrs. Charles Price
 Mr. and Mrs. R. Wayne
 Sandlin
 Col. and Mrs. Lew Simons
 Mr. and Mrs. Charles Sippial
 Mr. and Mrs. Simuel Sippial III
 Mr. and Mrs. Chuck Stewart
 Ms. Jenny Thiessen
 Ms. Jeanie Thompson
 Mr. and Mrs. Tommy L.
 Thompson III
 Mrs. Pat Wanglie

Mr. and Mrs. Christopher
 Wright
**\$249 – \$150
 CONTRIBUTOR**
 Ms. Barbara Adkins
 Ms. Kimberly Altizer
 Dr. Gerald Anderson II
 Ms. Nicole Anderson
 Mr. and Mrs. Gary Belmont
 Ms. Tatiana Bertsch
 Mr. and Mrs. Dave Borden
 Mr. James R. Bozeman, Jr.
 Mrs. Katie Bradshaw
 Mr. and Mrs. Edward M.
 Brummel, Jr.
 Mr. and Mrs. Thomas O.
 Coleman
 Mrs. Trnum Fitzpatrick
 Mr. and Mrs. David Funk
 Ms. Martha Rouse Gates
 Mr. Frank Gitschier
 Mrs. Warren Goodwyn

Mr. and Mrs. Henry H.
 Hutchinson
 Mr. and Mrs. Thomas M.
 James
 Dr. and Mrs. Carlton G. King
 Ms. Chintia Kirana
 Dr. and Mrs. William J.
 Knox III
 Mr. and Mrs. Richard L. Kohn
 Dr. and Mrs. Arthur Mazyck
 Mr. and Mrs. Tim McInnis
 Mr. and Mrs. John
 McWilliams
 Mr. and Mrs. Adam
 Muhlendorf
 Mr. and Mrs. Davis
 Dr. Sue Page
 Mr. and Mrs. Walter D.
 Phillips
 Mr. and Mrs. Walt Porter

Mrs. Stacia Robinson
 Ms. C. J. Robison and Mr.
 Christopher Holder
 Mrs. David C. Ross, Jr.
 Mr. and Mrs. T. Leslie
 Samuel III
 Ms. Kathy Sawyer
 Ms. Dawn M. Schloss
 Mr. and Mrs. James R. Seale
 Mr. James Sellars
 Ms. Jeanne Sellers
 Mr. and Mrs. Gregory Sellers
 Mr. and Mrs. Allen Sexton
 Mr. and Mrs. Charles
 Sheehan
 Mrs. Anita Sherman
 Ms. Lynn Stallings
 Mr. and Mrs. Emile Vaughan
 Mr. and Mrs. Clark Waggoner

Note: Donor recognition lists cover October 1, 2022 through September 30, 2023. We strive to present the highest degree of donor recognition accuracy while acknowledging human error.

Above: Photographs from the 2023 Flimp Festival in the Caddell Sculpture Garden.



Ms. Elaine Ward
Mr. and Mrs. Kim C. Weber
Dr. and Mrs. Glenn A. Yates

**\$149 – \$75
FAMILY/DUAL**

Jane Albright
Mr. and Mrs. Donald M. Aldredge
Dr. Daria Anagnos and Mr. Louis Anagnos
Ms. Savannah Barber
Dr. and Mrs. Steven A. Barrington
Dr. and Mrs. John Bennett
Ms. Dottie Blair
Mr. and Mrs. Charles W. Brown
Mr. and Mrs. Peter Brunke
Mrs. Mary Boykin Bullard
Dr. and Mrs. Russell Bush
Mr. and Mrs. Harrison Campbell
Charles and Virginia Canon
Ms. Andrea B. Carman
Mr. and Mrs. Bobby Chambliss

Mr. and Mrs. Calvin Chappelle
Ms. Diane Christy and Mr. Jeff Miller
Mrs. Thornton Clark
Mr. and Mrs. John Coe
Mr. and Mrs. Elliot Cohen
Dr. Ann Mountcastle and Mr. Ben Coker III
Mrs. Jennie Colbert-Kennedy
Mr. and Mrs. Mark Colson
Dr. and Mrs. James Conely
Mr. and Mrs. Frank Cook
Mr. Bob Corley and Ms. Sandra Polizos
Mr. and Mrs. Clint Darby
Dr. and Mrs. Russell Dean
Mr. and Mrs. William J. DePaola
Mrs. Gaynell Dixon
Mr. and Mrs. Brad Dooley
Mrs. Rachel Dudley
Mr. and Mrs. Ray Dugas
Dr. John Buettner and Dr. Kendall Dunn
Mrs. Vanessa Edwards
Mr. and Mrs. Frederick T. Enslin

Mr. Frank Franklin
Ms. Jennifer Nash Franks
Mr. and Mrs. Joseph Freedman
Dr. Elijah Gaddis and Ms. Andrea Martin
Ms. Michelle Gehring
Mr. and Mrs. G. C. Gilder
Mr. William Golson
Dr. Sarah Graves and Mr. Windham Graves
Mr. and Mrs. Ryan Greer
Ms. Virginia Gregory
Ms. Amy Grilliot
Cassandra Grimes
Dr. and Mrs. Geoff Habermacher
Ms. Anne Hails
Ms. Azha-Lynn Harwell and Mr. Mathew Beam
Mr. and Mrs. Al Head
Mr. and Mrs. Kenneth Heitkamp
Mr. and Mrs. Bo Henderson
Dr. and Mrs. David W. Hodo
Mr. and Mrs. Dan Holder
Dr. Kenyon Holder and Mr. Richard Metzger

Ms. Margaret Huang
Ms. Cecily Hulett
Mr. and Mrs. Robert Hutcheon
Mr. Octavius Jackson
The Rev. Dr. and Mrs. Duncan Johnston
Mr. and Mrs. Allan Jolly
Mrs. Dorothy Posey Jones
Dr. and Mrs. John Allen Jones III
Mr. and Mrs. James Kennedy
Dr. and Mrs. Carlton G. King
Mr. and Mrs. Robert Klevay
Dr. Vanessa Koelling and Mr. Jurjen Smies
Mr. Peter Krothapalli
Mr. and Mrs. Peter A. Land
Mr. Thomas Lawson
Mr. and Mrs. David Ledyard
Mr. and Mrs. Steve Linder
Justice and Mrs. James A. Main, Sr.
Dr. Michael Markus and Dr. Carly Johnson
Mr. and Mrs. Steven E. Mashburn

Mr. and Mrs. Thomson
McCorkle
Dr. and Mrs. Charles T.
McLemore
Dr. and Mrs. Duncan McRae,
Jr.
Dr. and Mrs. Thomas S.
Moore
Mr. and Mrs. Myron R.
Moreland
Ms. Connie Morrow and
Mr. Connor Carraway
Mr. and Mrs. Ronald W.
Myers
Mr. Robert Bradshaw Norris
Miss Wendy Ostlund
Ms. Patricia Payne
Prof. Christopher Payne and
Ms. Felicia Kahn
Mr. and Mrs. Frances Peebles
Mr. and Mrs. John Pickens
Mr. and Mrs. Nicholas A.
Prillaman
Mr. and Mrs. Phillip Rawls
Ms. Lauretta Roe
Dr. and Mrs. C.M.A. Rogers III
Lt. Gen. and Mrs. Ron Sams
Mr. and Mrs. Will Sanford
Mrs. Inez Sehgal
Drs. Nancy and Paul Shaw
Capt. Daniel Shea and
Jianjun Tang
Mr. and Mrs. Kreg Sherbine
Mr. and Mrs. Chris Simmons
Mr. Warren Simons and
Ms. Janice Prescott
Mr. and Mrs. Gil Steindorff III
Ms. Alice Stephens
Mr. and Mrs. William R.
Stevenson
Mr. and Mrs. Henry Stough
Dr. and Mrs. John Swan II
Mr. and Mrs. Stanley M. Tew
Mr. and Mrs. Patrick A.
Thomason
Ms. Cheryl Upchurch
Mr. and Mrs. Paul Vaccaro
Mr. and Mrs. Donald G.
Valeska
Dr. Thomas Vocino and
Dr. Caroline Adams
Ms. Anne Waldo
Mr. and Mrs. Lewis Ware
Ms. Virginia Warren
Mr. and Mrs. Jonathan West
Mrs. Debra Wiggins
Mr. Kenneth Williams

Rev. and Mrs. Robert C.
Wisnewski
Dr. Peter Young

**\$74 – \$45
INDIVIDUAL**

Ms. Wynn Dee Allen
Ms. Yolande Allen
Ms. Ginny Anderson
Ms. Dorothy Anthony
Mr. Richard Armstead
Ms. Dockery Austin
Ms. Gail Ball
Mr. Peter Barrios
Mrs. Lisa Beers
Ms. Valerie Blalock
Ms. Alexi Bolton
Ms. LaKeisha Boykins
Ms. Pam Bransford
Mr. Neal Brantley
Mr. Stephen M. Brickley
Mr. Mitchell Britt
Ms. Madeline Burkhardt
Dr. Loretta Burns
Ms. Ellen Bush
Dr. Cathy Campbell
Ms. Linda Cappelluzzo
Ms. Deloris Carter
Mr. Charles Casmus
Ms. Shamekia Chaney
Ms. LaCheryl Cillie
Mrs. Caroline Clark
Mrs. Linda S. Cobb
Ms. Amy Crosby
Mr. James Cross
Mrs. Apinya Curtis
Mrs. Katherine Danley
Mr. Brian Daughtry
Ms. Sandra W. Davis
Ms. Barbara DeMichels
Ms. Ellen Dempsey
Ms. Dorothy DiOrio
Ms. Miah Drake
Ms. Don Drenth
Dr. M. Bonner Engelhardt
Mr. Bill Ford
Mrs. Alane Fournier
Ms. Janice Franks
Ms. Nita Franz
Ms. Christine Freeman
Ms. Elizabeth French
Ms. Jill Friedman
Mrs. Ruth Frydrych
Mrs. Rachael Gallagher
Mr. Adam Garvin

Ms. Gail Glover
Mrs. Julie Goolsby
Mrs. Barb Grimes
Ms. Becky Haigler
Ms. Meg Hall
Mrs. Barbara Handmacher
Ms. Anne H. Harbin
Mrs. Terry Hare
Ms. Catherine Harper
Ms. Patricia Harris
Ms. Jean Hibino
Mr. Keith J. R. Hollingsworth
Dr. Susan Hood
Ms. Elnora Hoston
Ms. Carly Jamieson
Ms. Diane Johnson
Mr. Jefferson Jones
Mrs. Sharon Katona
Ms. Anne Kimzey
Ms. Ashley King
Mrs. Cookie Knott
Ms. Eleanor Lee
Mrs. Ann Lewis
Mr. Roosevelt Lewis
Mr. Zachary Lewis
Mr. Milton Madison
Ms. Marilee Mallory
Mr. Christopher Maloney
Ms. Sheldon Martin
Ms. Lora McClendon
Ms. Diane McFarland
Mr. Parker Medlin
Ms. Lynn Merrill
Ms. Lynn A. Mokray
Mrs. Brandy Morrison
Ms. Cara Morse
Ms. Susan Mustin
Ms. Pamela Paine
Ms. Elisabeth Palmer
Ms. Heather Parrish
Ms. Susie Paul
Ms. Sunny Paulk
Mrs. Betty Plaster
Mr. Jim Power, Jr.
Mr. Christopher Powers
Ms. Enid Probst
Ms. Grace Pugh
Ms. Jennie Rains
Dr. Frank C. Randall
Mrs. Patricia Randich-Dumas
Ms. Stephanie Reed
Dr. John Richardson
Ms. Charlene M. Roberson
Ms. Celeste Sabel

Mrs. Julie A. Salley
Mrs. Yong Sanson
Ms. Tara Sartorius
Mrs. Amy Seanor
Ms. Judith Seay
Mrs. Inez Sehgal
Mr. Randy Shoults
Mrs. Liza Lang Cardinal
Simpler
Ms. CarolLyn Simpson
Ms. Dorothy Skipper
Ms. Sonya Stallworth
Dr. Johnetta Stokes
Mr. and Mrs. John Susen
Mr. George Taylor
Ms. Emily Thomas
Col. Carol Anne Toms
Mrs. Erika Tracy
Ms. Pamela Trayte
Ms. Donna Trepagnier
Ms. Elisabeth Trevor
Ms. Ada Katherine van Wyhe
Mrs. Judy Walton
Mrs. Karen Weber
Ms. Beth Wicker
Ms. Barbara Wiedemann
Ms. Kathleen Wilkowske
Cmsgt. Mataya Williams
Dr. Susan Willis
Mrs. William A. Wright
Mrs. Evie Yonker
Mr. Michael Young
Ms. Lynne Zaris

Members are listed at the greatest level to which they belonged during the fiscal year.

Opposite: Photographs from our Juneteenth celebration in the Caddell Sculpture Garden.

MEMBERSHIP

CORPORATE PARTNERS

\$25,000+

SUSTAINING GUARANTOR

Carr, Riggs, & Ingram
Lamar Advertising Company
Poarch Band of Creek Indians

\$24,999 – \$10,000

GUARANTOR

Copeland Franco
Screws & Gill
Medical Properties Trust, Inc.
Rheem Manufacturing

\$9,999 – \$5,000

SPONSOR

Air Launch, LLC/Copperwing
AlaCOMP
Baptist Health
exploreMedia
MAX Credit Union
Merrill
PowerSouth Energy
Cooperative
Sabel Steel Service
ServisFirst Bank
Tier One

\$4,999 – \$2,500

ASSOCIATE

Alabama Weddings
AmeriFirstBank
Balch & Bingham, LLP
Ball, Ball, Matthews, &
Novak, P.A.
Barganier Davis Williams
Architects Associated

Beasley Allen Law Firm
CAPTRUST
Dixie Electric, Plumbing & Air
The Frazer Lanier Company
Goodwyn Mills Cawood
Hans Heating and Air
Harmon Dennis
Bradshaw, Inc.
Hodges Warehouse and
Logistics
Jernigan and Jernigan, LLC
Morgan Stanley: The Groce
& Oakley and the Runkle
Wealth Management
Groups
Nick Drollette Photography
Raymond James & Associates
Renasant Bank
Rich's Car Wash
River Bank & Trust
River Region Parents
Rushton, Stakely, Johnson,
and Garrett, P.A.
Russell Construction of
Alabama Inc.
Standard Commercial
Roofing & Envelope
Solutions
Synovus
Thompson Insurance, Inc.
Troy Bank and Trust
Valley Bank
Warren Averett
W.K. Upchurch Construction

Institute of Museum and
Library Services
Maxwell Gunter Spouses Club
Regions Bank
Smithsonian Institution
Traveling Exhibition Service
South Arts
Southern Poverty Law Center
State Farm

SCULPTURE GARDEN GIFTS

Montgomery Garden Club
Ms. Alice Novak and Mr.
David Carter (in honor of
Julie and Brad Echols)
Phillip Ould Rawlings

SPECIAL SCULPTURE GARDEN GIFT

The John and Joyce
Caddell Foundation
Carolyn and Dr. Alfred J.
Newman, Jr.

GIFTS TO THE GENERAL FUND

AmazonSmile Foundation
Anonymous Donor
Anonymous Visitors
Mr. and Mrs. Jere L. Beasley
Ms. Ellen Dempsey
Ms. Angie Dodson
Ms. Don Drenth
Facebook/Meta
Mr. Bill Ford
Ms. Jennifer Nash Franks
Ms. Elizabeth French
Mr. and Mrs. Wade Gober
Mr. and Mrs. Al Head
Hooper Academy
Mr. and Mrs. W.
Daniel Hughes
Mr. and Mrs. Louis F.
Ialacci, Jr.
Sebastian Lukasik
Pam Mashburn
Ms. Diane McFarland
Dr. Guin S. Nance
Dr. Ward Newcomb and
Mrs. Lisa Newcomb
Mr. Robert Bradshaw Norris
The River Region
Homeschool

Fred D. Reynolds
Charitable Trust
Ms. Sheron J. Rose
Mr. Randy Shoults
Ms. Alice Stephens
Mr. and Mrs. Tommy
L. Thompson III
Ms. Anne Waldo
Ms. Virginia Warren
Mr. and Mrs. Kim C. Weber
Laurie Jean Weil, D.V.M. and
Dr. Tommy Wool
Mr. and Mrs.
Christopher Wright

IN HONOR GIFTS

In honor of Ms. Jan K. Weil
Avgar and Mr. Amos Avgar
Mr. and Mrs. Adolph Weil III
In honor of Tom and
Jane Killian
Justice Kelli Wise and
Judge Arthur Ray
In honor of Judge J. Elizabeth
Kellum
Justice Kelli Wise and
Judge Arthur Ray
In honor of Clark Walker
Mr. and Mrs.
Kendall Weaver
Wool Family Foundation
In honor of Mr. and Mrs.
Adolph Weil III
Ms. Jan K. Weil Avgar and
Mr. Amos Avgar
In honor of Laurie J. Weil
D.V.M. and Dr. Tommy Wool
Ms. Jan K. Weil Avgar and
Mr. Amos Avgar
Mr. and Mrs. Adolph Weil III
Tricia Wool
Wool Family Foundation

IN MEMORIAM GIFTS

In memory of Connor Bartlett
Eric Bartlett
In memory of John A. Caddell
Mark Baldino
Capell & Howard
Ms. Alice Novak and
Mr. David Carter
The Colonial Company
Hufham Farris
Construction
Mr. and Mrs. Charles
A. Stakely

PHILANTHROPY

GIFTS OF ART

Mr. Ke Francis
Mr. and Mrs. Charles Gross
Herbert D. Halpern Collection
The Judith Alexander
Foundation
Mr. and Mrs. W. G.
Schuetzenduebel
Ms. Micki Beth Stiller

Note: Donor recognition lists cover
October 1, 2022 through September 30,
2023. We strive to present the highest
degree of donor recognition accuracy
while acknowledging human error.

GRANTORS

Alabama Humanities Alliance
Alabama Power Foundation
Alabama State Council on
the Arts
Alabama Visual Arts Network
Art Bridges Foundation
Ford Foundation
Daniel Foundation of Alabama
Google
Hyundai Motor Manufacturing
Alabama, LLC



In memory of
Bobby Dale Chandler

Tippett Sease Baker
Architecture

In memory of Mildred Combs

Dr. Robert M. Combs

In memory of Camille Elebash

Mr. and Mrs.
Richard L. Kohn

In memory of
Martha Fitzpatrick

The Antiquarian Society
of Montgomery

In memory of Alma Freeman

MMFA Docent Council

In memory of CD Gaston

Jeanne Dean, Lyle Wilder,
and Kitty Harris

In memory of Ilouise Hill

The Antiquarian Society
of Montgomery

In memory of Kent Jenkins

The Antiquarian Society of
Montgomery

In memory of
Mr. William Inge Hill, Jr.

Dr. and Mrs. John Swan II
Mr. and Mrs. Tabor R.

Novak, Jr.

Mr. John F. Smith, Jr.

In memory of Gilbert Jones

Mrs. Dorothy Posey Jones

In memory of Mike Luckett

Mr. and Mrs. Barrie H.
Harmon III

Ms. Martha Rouse Gates

In memory of
Robin Nance Metz

Ms. Tara Sartorius

In memory of Pam Moulton

Mr. James R. Bozeman, Jr.

In memory of Mrs. Rebecca
Sansom Rhodes

Anonymous Donor

Ms. Angie Dodson

Mr. and Mrs. Jason Rhodes

Mr. Rick Dildine and

Mr. Stephen Hayes

In memory of
Virginia Simpson

The Antiquarian Society
of Montgomery

In memory of
Catherine Tipton

Ms. Catharine T. Harper

In memory of
Judy Means Wagon

Mr. and Mrs.
Henry Weatherly

In memory of Barbara Walker

Sophia Daniel

In memory of
Marguerite Wood

The Antiquarian Society
of Montgomery

In memory of
Babette Wampold

Ms. Alice Novak and
Mr. David Carter

Mr. and Mrs. Charles
A. Stakely

Laurie Jean Weil, D.V.M.
and Dr. Tommy Wool

In memory of Drs. Jack and
Verna Wool

Wool Family Foundation

SPECIAL GIFTS

Mrs. Helen Till

Ms. Jan K. Weil Avgar and Mr.
Amos Avgar

Crum Family Charitable
Foundation

Estate of Mrs. Frances Durr

David Moody

Mr. and Mrs. Edward T.
Hails, Jr.

Dr. Robert M. Combs

Mr. and Mrs. Adolph Weil III

Ball, Ball, Matthews, &
Novak, P.A.

IN KIND GIFTS

Alabama Public Radio

Mr. and Mrs. Barrie H.
Harmon III

Laurie Jean Weil, D.V.M

Above: Photographs from our first
annual Fall Festival

AFFINITY GROUPS

DOCENTS

DOCENT COUNCIL (2022–2023)

October 2022 to April 2023

Frank Gitschier
Chair

Pamela Swan
Vice Chair

Rhonda Thomason
Secretary

Diane Christy
Docent At-Large

Barbara DeMichels
Docent At-Large

May to September 2023

Diane Christy
Chair

Julie Goolsby
Vice Chair

Penny Thompson
Secretary

Beverly Bennett
Docent At-Large

Dan Holder
Docent At-Large

MUSES

Amal Abdelaziz
Emilee Alexander
Emily Armour
Amia Carter
Neo Choi
Eugene Chun
Charles Gaston
Haley Hurst
Lucy Hwang
Kevin Hwang
Ayesha Irfan
Kiersten Jackson

Adriana Johnson
MaryEllis Killough
Aiden Lee
Eric Li
Evan Li
Logan Moseley
Sairish Qadri
Amaya Rodriguez
Chloe Song
Jessica Tran
Eric Vo

MEMBERS

Grace Cook
Katherine Danley
Maria Freedman
Frank Gitschier
Gloria Holder
Sharon Katona
Liz Land
Connie Morrow
Mary Lil Owens

CJ Robison
Julie Salley
Gloria Simons
Gretchen Sippial
Paula Smith
Paula Susen
Carol Tew
Pat Wanglie

Below: Local artist Sunny Paulk creates a chalk mural as part of Chalk Festival in September 2023.



Montgomery Museum of Fine Arts

Blount Cultural Park

One Museum Drive
Montgomery, AL 36117

Open Tuesday through Sunday
Free Entry + Free Parking

mmfa.org
@MontgomeryMFA