

BID

FAREWELL

Montgomery Museum of Fine Arts

**ART
AUCTION
2021**

Art Auction 2021 Generously Sponsored by

LEAD SPONSORS

Laura and Barrie Harmon
Medical Properties Trust
Morgan Stanley
Rheem Manufacturing Company

SPONSORS

Merrill Lynch
ServisFirst Bank
Mr. and Mrs. Todd Strange

Special Thanks to

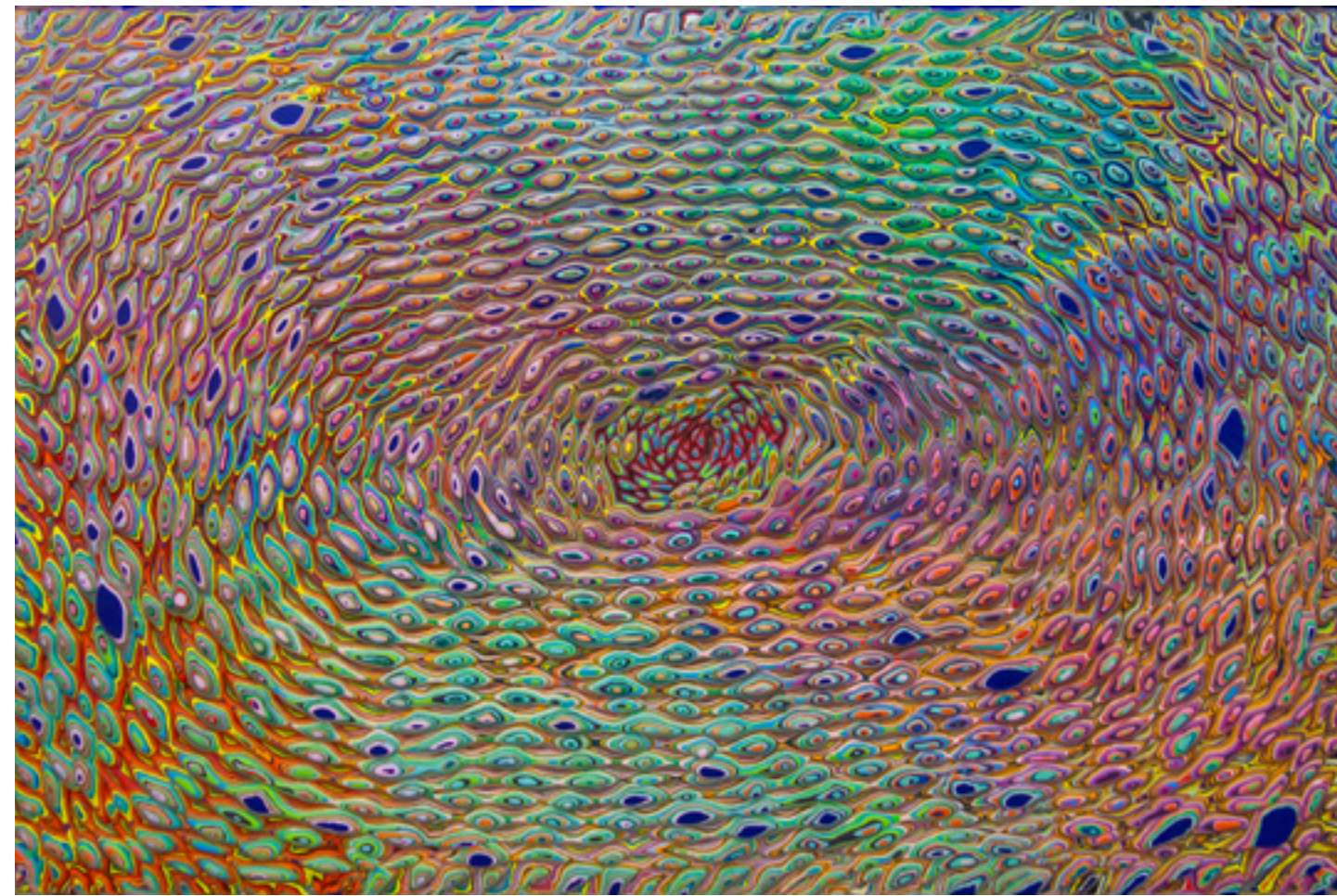
Alabama Power Company	Russell Lands, Lake Martin
Common Bond Brewers	Sanctuary Cigars, Pat Ryan
Fennel & Fig	Tomatinos, Missy Mercer
Mellow Mushroom, Alice Longshore	Vintage Year Restaurant & Bar/Catering, Jud Blount
Michael Hochhalter	
Pine Bar, Casson Willett	
Redmont Distillery Co.	

CO-SPONSORS

Ball, Ball, Matthews & Novak PA
Barganier Davis Williams Architects Associated, AIA
Beasley Allen Law Firm
The Frazer Lanier Company
Jackson Hospital & Clinic
Mr. and Mrs. Rhon Jones
Jordan, Alice, and Gardner in memory
of their father, Jim Barganier
Rushton, Stakely, Johnston & Garrett PA
Warren Averett

Art Selection Committee

Phillip Rawlings Chair	
Winston Wilson Reese Co-chair	
Jane Barganier	Trey Hayes
Keven Belt	Gage LeQuire
Ben Cumbus	Clay McInnis
Laura Dockery	Liza Simpler
Will Fuller	Patrick Sullivan
Susan Geddie	Todd Strange



How Things Work

Art Auction 2021 opens for bidding on Saturday, September 11, at 10 AM with opportunities to bid in person during normal Museum hours through October 13.

Bid numbers can be secured at the Museum or by contacting the Development Department at 334-625-4348. The Art Auction catalogue including images and details of each item will be hosted on the MMFA website. In person bidding is highly encouraged; however, proxy bids can be made for those who cannot attend the gala by contacting the Development Department. All auction items have an opening bid price and a minimum increase amount (indicated in the catalogue and in the gallery).

Gala tickets can be purchased at mmfa.org/artauction for \$65 per person from Saturday, September 11, through Friday, October 1. The event dress is cocktail attire and will be held in the Caddell Sculpture Garden and Lowder Gallery on Thursday, October 14, from 6:30 until 9 PM.

Silent auction bid closings will be staggered, and the winning bid number will be posted on the item's wall label as quickly as possible.

The Museum requests that purchasers allow at least 30 to 45 minutes after the bidding closes for the Museum to process corresponding paperwork and to pack each piece before claiming artworks.

All purchases are subject to ten percent sales tax.

MasterCard, Visa, American Express, cash, and checks, payable to the Montgomery Museum of Fine Arts Association, are accepted. Credit cards fees will be passed onto the purchaser at a flat fee of 3%.

All offerings are subject to the Conditions of Sale in the back of this catalogue.

Above: Holton Rower, Untitled (HROW 0138), 2020, paint on plywood, 33 1/4 x 49 3/4 x 3 in., Arthur Roger Gallery, New Orleans, LA

Bid Information: Item #98; Retail \$32,000; Opening Bid \$24,000

From the Director

BIDDING FAREWELL

Limber-up those bidding arms...and loosen-up those purse strings—it's time for the MMFA's Art Auction 2021 to commence!

Since 1992, the Museum has presented a biennial art auction to, at once, create opportunities for local art lovers to expand their personal collections and raise funds to support a range of Museum activities including acquisitions, exhibitions, and programs. Here, on the occasion of the 15th MMFA Art Auction, we playfully "bid farewell" to it as an every-other year offering in this exact form. For anyone saddened by this news, fear not—after a rest, opportunities to acquire art will find a new form in the broadened line-up of signature social and fundraising events held here at the Museum over the years. And, other "parties with a purpose"—new and different opportunities to come together around art and socialize in ways that benefit the Museum and the community—are just on the horizon. Mark your calendars now for a new offering—Art and the Automobile—rolling into town for the first time in spring 2022.

For now, though, we'll remain in the present and celebrate the moment at hand with our first "post-pandemic" chance to come together in community as well as an *in-person*—not .com!—opportunity to buy some art to freshen-up the rooms of our homes that we've become oh-so accustomed to over the past 18 months! Fortuitously, these personal actions also help the Museum to rebuild its coffers and service to the community to their pre-pandemic levels—everyone wins.

As with every win-win proposition, there's a legion of creative, generous, and devoted thinkers and doers leading the charge. In the case of this year's Art Auction, there were 14 volunteers who collaboratively envisioned the event and strategically sought out the art for auction. A glimpse behind the scenes of just one facet of this year's enterprise: once pandemic conditions began to ease, the selection committee took to the road—to festivals in Birmingham, Fairhope, and North Carolina as well as galleries in Charleston and New Orleans. Each member spent more than two weeks away from home, logged some 2500 miles, visited 25 galleries, 40 artists, slogged through muddy festival grounds, and squeezed through hot and sunny tent-lined market streets.

One of the many wonders of any MMFA Art Auction is its ease of access to work by regional artists beyond those whose work is featured in the Museum Shop and at our annual Artists Market. With Art Auction 2021, we encounter a stunning selection of just 115 carefully-curated items representing the bounty of work created across our region by some of the most fascinating makers of any place or time.

Clockwise (from top left): Michael and KayMarie Briddell and Brooke Reid at Art Auction 2012; Margaret Lynne Ausfeld and Corinna Wilson at the first Art Auction in 1992; Dr. Ben and Ginny Cumbus at Art Auction 2014; Margaret and Jimmy Lowder at Art Auction 2004; Auctioneer displays live auction work at Art Auction 2018.



15 Art Auctions
30 Years
\$1.5 Million Raised
for collections, exhibitions, and education programs



With Appreciation and Gratitude to the Participating Galleries & Artists

When traveling, please take time to visit the galleries participating in Art Auction 2021.

GALLERIES

- Alexis Walter Art**
New Orleans, LA
alexiswalter.com
Alexis Walter
- Amber Ivey Gallery**
Mobile, AL
amberiveyfineart.com
Amber Ivey
- Arthur Roger Gallery**
New Orleans, LA
arthurrrogallery.com
Allison Stewart
Andrew Bascle
Edward Whiteman
Francis X Pavy
Holton Rower
Jim Richard
- Ashley Longshore Studio Gallery**
New Orleans, LA
ashleylongshore.com
Ashley Longshore
- B Viz Design**
New Orleans, LA
bvizdesign.com
Becky Vizard
- Billy Solitario Fine Art**
New Orleans, LA
billysolitario.com
Billy Solitario
- Callan Contemporary**
New Orleans, LA
callancontemporary.com
Michael Kessler
Raine Bedsole
Theresa Cole
- Corrigan Gallery**
Charleston, SC
corrigan-gallery.com
Arthur McDonald
Jennifer Foos Jones
- Galerie Rue Royale**
New Orleans, LA
frenchart.net
Denis Lebuqc
Katerine Nevolina

LePrince Fine Arts
Charleston, SC
leprince.com
Vicki Robinson

Jonathan Ferrara Gallery
New Orleans, LA
jonathanferraragallery.com
Carlton Scott Sturgill

O'Connor Art Studios, LLC
Tuscaloosa, AL
oconnorartstudios.com
Caleb O'Connor

Octavia Art Gallery
New Orleans, LA
octaviaartgallery.com
Danielle Frankenthal
Erica Larkin Gaudet
Scott Andresen

Principle Gallery
Charleston, SC
principlegallery.com
Andrew Madvin

Reinert Fine Art and Sculpture Garden Gallery
Charleston, SC
reinertfineart.com
Rick Reinert

Rhett Thurman Studio
Charleston, SC
rhettthurmanstudio.com
Rhett Thurman

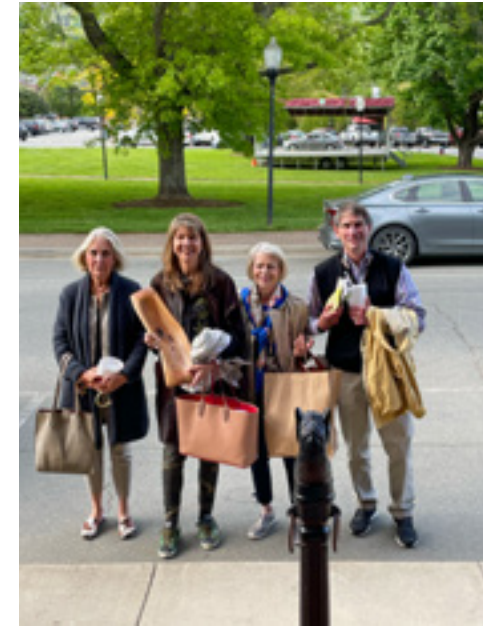
Robert Lange Studio
Charleston, SC
robertlangestudios.com
Adam Hall
Brett Scheifflee

Scott Antique Markets
Atlanta, GA
scottantiquemarket.com

Studio Amanda Talley
New Orleans, LA
amandatalley.com
Amanda Talley

ARTISTS

- Larry Allen
Ana Marie Andricain
Michael Banks
Michael Bastian
Reynolds Beal
Tony Bennett
William & Katherine Bernstein
Bill Berra
Michael Bonardi
Cal Breed
Jenny Bullard
Nate Cotterman
Gary Daniels
Penny Dobson
William Dunlap
Paul Eisenhauer
Jennifer Fields
Barbara Gallagher
Braden Grafe
Bethanne Hill
Leigh Ann Hurst
Austin Allen James
Paul Johnson
JoAnne LaPoma
Robert Levin
Jeannine Marchand
Richard Mills
Toni Lawson Norris
Caleb O'Connor
Claude Peacock
Kenny Pieper
Robert Rivers
Peter Rujuwa
Delia Stone
Gyl Turner
Eric Wall
Yvonne Wells
Mick Whitcomb



"Art is too important not to share."

– Romero Britto

Clockwise (from left) 2021 Art Auction Trips: Phillip Rawlings watches Katherine and William Bernstein blow glass; Jane Barganier, Gage LeQuire, and Gloria and Phillip Rawlings; Art Selection Committee views artworks at Amber Ivey Gallery in Mobile, AL; Jane Barganier, Keven Belt, Jimmy Dockery, Judge Gene Reese, Laura Dockery, Catherine Gayle Thrash, Gloria Rawlings, Susan Geddie, Phillip Rawlings, Will Fuller, Winston Wilson Reese, Tisha Rhodes, Gage LeQuire, and Jason Rhodes; Jane Barganier and Gage LeQuire stand outside the entrance to William & Katherine Bernstein's glass studio.

Silent Auction Items

ARTWORK

"Art transcends cultural boundaries."

– Thomas Kinkade



001 Lamp
Unknown
Driftwood, 27 x 25 in.
Scott Antique Market
Opening Bid: \$500 Retail: \$1,375
Min. Incr.: \$50



008 Large Bench
Unknown
Teak, 16 x 22 x 23 in.
Scott Antique Market
Opening Bid: \$500 Retail: \$625
Min. Incr.: \$50



009 Untitled
Unknown
Coral, 17 x 5 in.
Scott Antique Market
Opening Bid: \$300 Retail: \$475
Min. Incr.: \$50



010 African Shields, Set of Two
Unknown
Wood, 10 x 21 in. each
Scott Antique Market
Opening Bid: \$250 Retail: \$375
Min. Incr.: \$25



002 Bowl
Unknown
Onyx, 12 x 4 in.
Scott Antique Market
Opening Bid: \$350 Retail: \$700
Min. Incr.: \$50



003 Bowl
Unknown
Wood, 18 x 17 in.
Scott Antique Market
Opening Bid: \$90 Retail: \$125
Min. Incr.: \$25



004 Untitled
Unknown
Wood and iron, 13 x 33 in.
Scott Antique Market
Opening Bid: \$225 Retail: \$300
Min. Incr.: \$25



011 Art Deco Cobalt Glass Vases on Gilded Bases, Set of Two
JoAnne LaPoma
Glass, 14 x 9 in. each
Scott Antique Market
Opening Bid: \$950 Retail: \$1,200
Min. Incr.: \$100



012 Cork Screw, about 1890
Unknown
Warhog tusk, sterling silver, and metal, 6 x 7 in.
Scott Antique Market
Opening Bid: \$475 Retail: \$580
Min. Incr.: \$50



013 Untitled
Unknown
Blown glass, 9 1/2 x 25 in.
Retail: \$1,200
Opening Bid: \$500 Min. Incr.: \$50



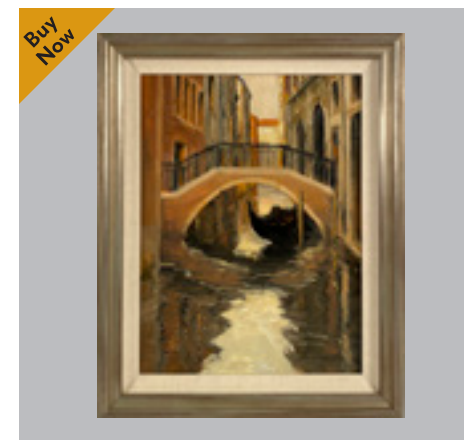
005 Small Stool
Unknown
Driftwood, 16 x 14 in.
Scott Antique Market
Opening Bid: \$150 Retail: \$250
Min. Incr.: \$25



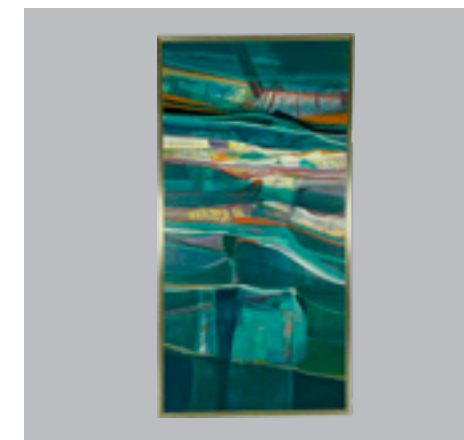
006 Willie Mays Artist Proof
Caleb O'Connor
Bronze mold, 16 x 12 in.
In Memory of Phillip Ould Rawlings, Jr., MD.
Retail: \$1,500
Opening Bid: \$1,100 Min. Incr.: \$100



007 Bookends, Set of Two
Unknown
Petrified wood, 8 x 5 in. each
Scott Antique Market
Opening Bid: \$100 Retail: \$150
Min. Incr.: \$25



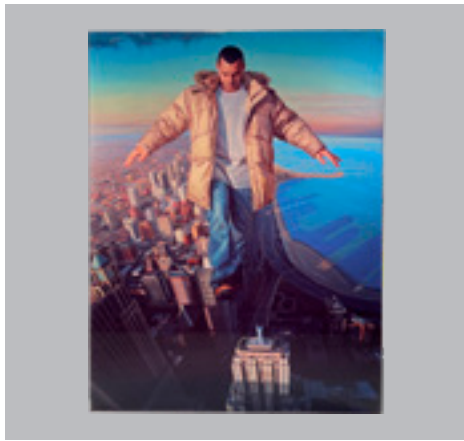
014 Venetian Canal
Bill Berra
Oil on canvas, 15 1/2 x 19 1/2 in.
Retail: \$5,200
Opening Bid: \$1,800 Min. Incr.: \$100
Buy Now: \$3,000



015 Untitled
Barbara Gallagher
Oil on canvas, 81 1/4 x 41 1/4 in.
Retail: \$7,500
Opening Bid: \$1,200 Min. Incr.: \$100



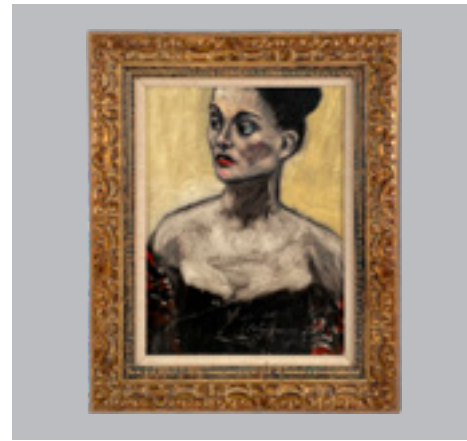
016 Kickin' Up Dirt 2, 2001
Tony Bennett
Watercolor on paper (Signed, 144/300), 28 1/2 x 30 in.
Retail: \$2,000
Opening Bid: \$400 Min. Incr.: \$25



017 *Figurative Painting Over Chicago*
Caleb O'Connor
Oil on glass, 34 x 44 in.
Retail: \$16,000
Opening Bid: \$1,500 Min. Incr.: \$100



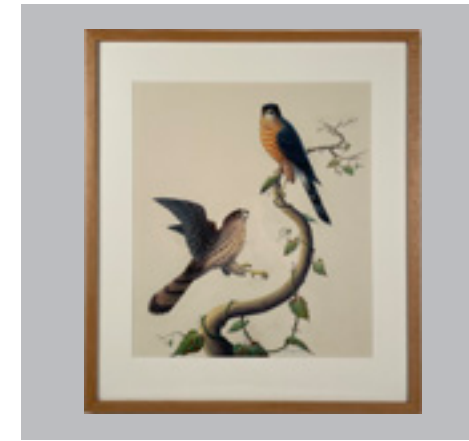
018 *Spalted Maple Live Edge Console Table*
Unknown
Wood and steel, 51 x 34 x 16 1/2 in.
Scott Antique Market Retail: \$1,200
Opening Bid: \$850 Min. Incr.: \$50



019 *La Contesse*
Paul Johnson
Oil on Masonite, 17 3/4 x 21 3/4 in.
Retail: \$2,200
Opening Bid: \$1,000 Min. Incr.: \$50



026 *Bass Rock, 2001*
Robert Rivers
Etching on paper, 22 5/16 x 30 in.
Retail: \$500
Opening Bid: \$200 Min. Incr.: \$25



027 *Cooper's Hawk, 1962*
Claude Peacock
Gouache on paper, 28 7/8 x 25 1/4 in.
Retail: \$600
Opening Bid: \$200 Min. Incr.: \$25



028 *Untitled*
Peter Rujuwa
Cast concrete, 22 x 20 in.
Magic City Art Connection Retail: \$6,000
Opening Bid: \$1,500 Min. Incr.: \$100
Buy Now: \$4,000



020 *Malay Sampan, Strait of Malacca, 1935*
Reynolds Beal
Watercolor on paper, 15 x 21 in.
Retail: \$700
Opening Bid: \$400 Min. Incr.: \$50



021 *Down Wind*
William Dunlap
Pigment print, Artists proof, 26 x 20 in.
Retail: \$1,800
Opening Bid: \$600 Min. Incr.: \$50



022 *Flower and Vase, 1988*
Yvonne Wells
Cotton, 34 x 26 1/2 in.
Retail: \$400
Opening Bid: \$200 Min. Incr.: \$25



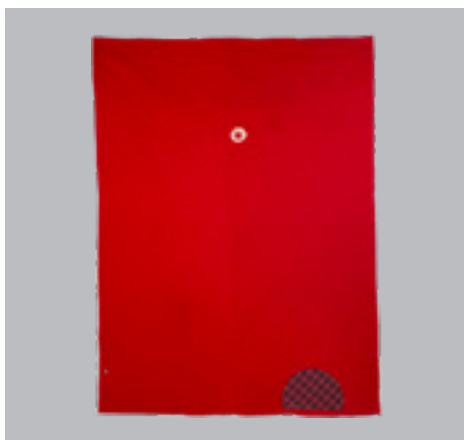
029 *Untitled*
Michael Bastian
Metal on wood, 8 x 10 in.
Magic City Art Connection Retail: \$175
Opening Bid: \$125 Min. Incr.: \$25



030 *Mugs, Set of Four*
Jennifer Fields
Pottery, 5 x 4 in. each
Magic City Art Connection Retail: \$160
Opening Bid: \$100 Min. Incr.: \$25



031 *Coral Necklace*
Ana Marie Andricain
Coral, 20 1/4 x 1 x 1 in.
Magic City Art Connection Retail: \$600
Opening Bid: \$300 Min. Incr.: \$25



023 *Red Star, 1991*
Yvonne Wells
Cotton, 52 x 40 in.
Retail: \$800
Opening Bid: \$400 Min. Incr.: \$50



024 *Blue Hawaii*
Yvonne Wells
Cotton, 57 x 35 in.
Retail: \$400
Opening Bid: \$200 Min. Incr.: \$25



025 *Untitled*
Yvonne Wells
Cotton, 26 x 18 in.
Retail: \$200
Opening Bid: \$50 Min. Incr.: \$10



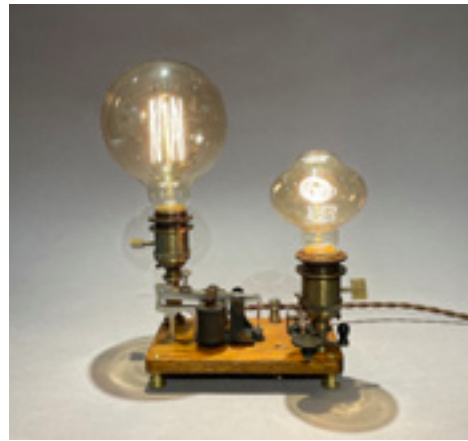
032 *Australian Opal Necklace*
Delia Stone
14k gold, sterling silver, and opal, 12 x 1 1/2 in.
Magic City Art Connection Retail: \$375
Opening Bid: \$200 Min. Incr.: \$25



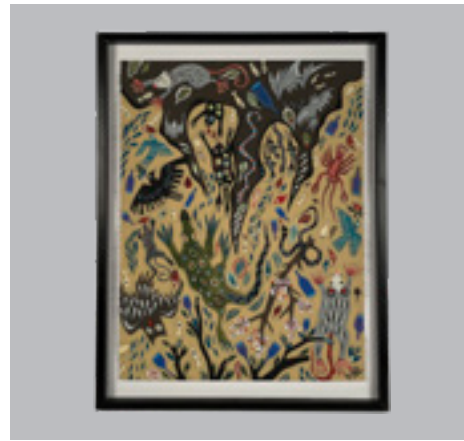
033 *Floral Path*
Eric Wall
Oil on canvas, 44 x 31 3/4 in.
Retail: \$3,500
Opening Bid: \$1,500 Min. Incr.: \$50



034 *Untitled*
Larry Allen
Pottery, 13 x 12 in.
Magic City Art Connection Retail: \$500
Opening Bid: \$400 Min. Incr.: \$25



035 Lamp
Mick Whitcomb
Recycled materials, 7 x 12 in.
Magic City Art Connection Retail: \$750
Opening Bid: \$400 Min. Incr.: \$50



036 Rainmaker
Bethanne Hill
Acrylic on paper, 30 x 22 in.
Magic City Art Connection Retail: \$1,500
Opening Bid: \$1,200 Min. Incr.: \$50



037 Etaples, 1895
Reynolds Beal
Oil on canvas, 19 x 15 in.
Retail: \$1,000
Opening Bid: \$650 Min. Incr.: \$50



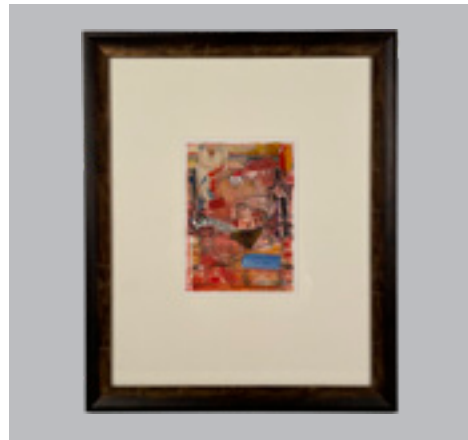
044 Automne, 2019
Katerina Nevolina
Oil on linen, 40 x 40 in.
Galerie Rue Royale Retail: \$5,950
Opening Bid: \$3,500 Min. Incr.: \$100



045 Moon Over Montgomery, 2021
Rick Reinert
Oil on canvas, 48 x 36 in.
Reinert Fine Art Retail: \$9,500
Opening Bid: \$4,750 Min. Incr.: \$100
Buy Now: \$7,500



046 The Harvest is Plenty
Braden Grafe
Oil on canvas, 20 x 16 in.
Fairhope Arts & Crafts Festival Retail: \$400
Opening Bid: \$275 Min. Incr.: \$25



038 Untitled, 2018
Richard Mills
Watercolor on paper, 22 1/4 x 18 1/4 in.
Retail: \$800
Opening Bid: \$600 Min. Incr.: \$25



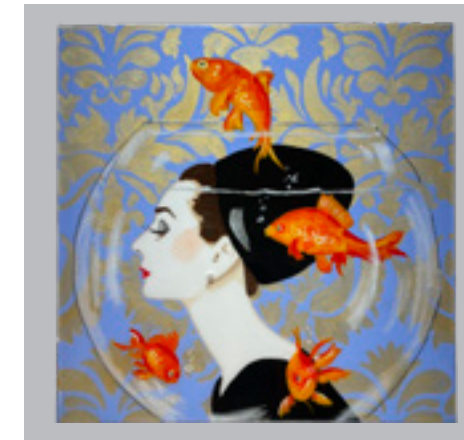
039 Glass Ornaments, Set of Five
Cal Breed
Free-blown glass, 4.5 x 5 in. each
Retail: \$210
Opening Bid: \$125 Min. Incr.: \$25



040 Marilyn
Austin Allen James
Mixed media, 20 x 20 in.
Villa Decor Retail: \$550
Opening Bid: \$375 Min. Incr.: \$25



047 Lamp
Mick Whitcomb
Recycled materials, 9 x 9 in.
Magic City Art Connection Retail: \$450
Opening Bid: \$250 Min. Incr.: \$25



048 Audrey Fishbowl with Blue Damask Background
Ashley Longshore
Oil on canvas, 24 x 24 in.
Ashley Longshore Gallery Retail: \$7,000
Opening Bid: \$4,000 Min. Incr.: \$250



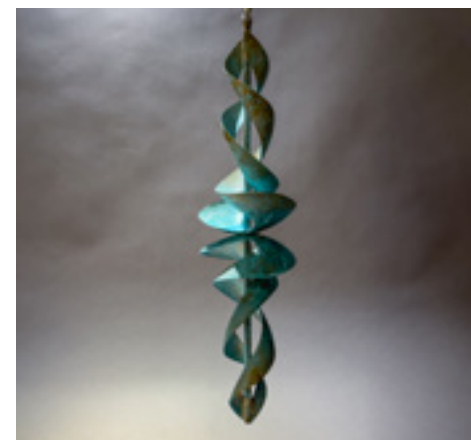
049 Cufflinks
Michael Bonardi
Uncirculated US coin and stainless steel,
1 inch each
Fairhope Arts & Crafts Festival Retail: \$65
Opening Bid: \$45 Min. Incr.: \$10



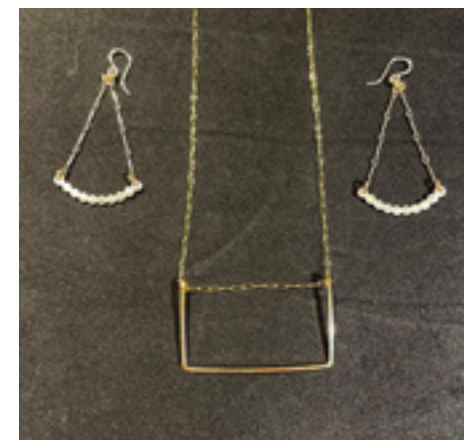
041 Untitled
Michael Banks
Acrylic on Masonite, 14 x 26 in.
Fairhope Arts & Crafts Festival Retail: \$650
Opening Bid: \$450 Min. Incr.: \$25



042 God the Glory
Michael Banks
Repurposed wood and paint mounted on wood,
9 1/2 x 20 in.
Fairhope Arts & Crafts Festival Retail: \$425
Opening Bid: \$200 Min. Incr.: \$25



043 Garden Wind Catcher
Gary Daniels
Copper, 22 x 6 in.
Fairhope Arts & Crafts Festival Retail: \$350
Opening Bid: \$150 Min. Incr.: \$25



050 Handcrafted Necklace and Earrings
Leigh Ann Hurst
14k gold-filled, 6 in., 1 1/2 in.
Fairhope Arts & Crafts Festival Retail: \$350
Opening Bid: \$175 Min. Incr.: \$25



051 Round Ripple Vase, 2021
Kenny Pieper
Blown glass, 7 1/2 x 7 x 7 in.
Kenny Pieper Gallery Retail: \$190
Opening Bid: \$120 Min. Incr.: \$25



052 Cosmos II, 2014
Robert Levin
Glass and gold leaf, 3 1/2 x 7 x 7 in.
Robert Levin Glass Retail: \$950
Opening Bid: \$625 Min. Incr.: \$25



053 Kingfisher Radio
Penny Dobson
Mixed media, 4 x 7 x 2 in.
Fairhope Arts & Crafts Festival
Opening Bid: \$125



054 Untitled
Penny Dobson
Mixed media, 6 3/4 x 5 x 1 1/4 in.
Fairhope Arts & Crafts Festival
Opening Bid: \$125



055 Congrats
Michael Banks
Acrylic on Masonite, 18 x 24 in.
Fairhope Arts & Crafts Festival
Opening Bid: \$250



062 Face Vase, 2017
William & Katherine Bernstein
Blown glass with hot cane decor,
10 1/2 x 5 1/2 in.
Bernstein Glass
Opening Bid: \$325



063 Dancer Bud Vase, 2020
William & Katherine Bernstein
Blown glass with hot cane decor,
6 1/4 x 3 3/4 in.
Bernstein Glass
Opening Bid: \$325



064 Untitled, 2018
Unknown
Natural mineral, 21 1/2 x 4 x 2 in.
Gem Mountain on Main
Retail: \$300
Opening Bid: \$125



056 Decanter
Nate Cotterman
Glass and gold, 18 x 24 in.
Nate Cotterman Glass
Opening Bid: \$125



057 White Reticello Kylix, 2021
Kenny Pieper
Blown glass with hot cane decor,
13 x 15 x 15 in.
Kenny Pieper Gallery
Opening Bid: \$1,100



058 Petite Cube Glasses, Set of Six
Nate Cotterman
Glass, 3 x 3 x 3 in.
Nate Cotterman Glass
Opening Bid: \$400



065 Bowl, 2019
Paul Eisenhauer
Sycamore, 22 x 7 1/2 x 2 1/2 in.
Foundation Woodworks Gallery
Retail: \$395
Opening Bid: \$250



066 Bowl of Folds, 2019
Jeannine Marchand
White earthen clay, 7 x 7 x 7 in.
Jeannine Marchand Studios
Opening Bid: \$750



067 Folds CXXXVII, 2019
Jeannine Marchand
White earthen clay, 19 1/4 x 11 3/4 x 1 3/4 in.
Jeannine Marchand Studios
Opening Bid: \$2,100,



059 Sphere Wine Glasses, Set of Six
Nate Cotterman
Glass, 4 3/4 x 3 1/2 x 3 1/2 in.
Nate Cotterman Glass
Opening Bid: \$460



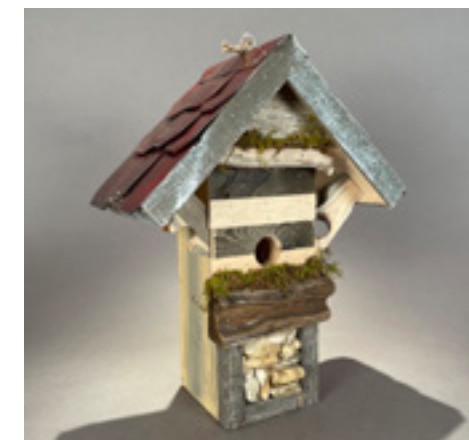
060 Frosted Vase, 2014
Robert Levin
Hand blown and sand blasted glass,
12 x 5 1/2 x 5 1/2 in.
Robert Levin Glass
Opening Bid: \$325



061 Frosted Bowl, 2014
Robert Levin
Hand blown and sand blasted glass,
6 x 8 x 8 in.
Robert Levin Glass
Opening Bid: \$325



068 Untitled
Alexis Walter
Oil on canvas mounted on wood,
7 x 5 x 1/2 in.
Retail: \$250
Opening Bid: \$75



069 Untitled
Unknown
Mixed media, 18 1/2 x 15 x 8 in.
Retail: \$300
Opening Bid: \$120



070 Thorn Vessel, 2020
Andrew Madvin
Glass, 8 x 7 1/2 x 8 in.
Principle Gallery
Opening Bid: \$625



071 Two Doves
Jennifer Foos Jones
Clay, 7 x 12 x 5 in.
Corrigan Gallery
Opening Bid: \$150



072 A Glowing Moment, 2020
Adam Hall
Oil on panel, 8 x 8 in.
Robert Lange Studios
Opening Bid: \$750



073 Walnut Throne, 2020
Paul Eisenhauer
Black Walnut, 57 x 21 x 36 in. (500lbs)
Foundations Woodworks Gallery
Opening Bid: \$4,000
Buy Now: \$5,200



080 Paris Adieu, 2019
Rhett Thurman
Oil on canvas, 20 x 30 in.
Rhett Thurman Studio
Opening Bid: \$2,800



081 Smoky Quartz Pendant
Unknown
18k yellow gold and quartz, 1 3/4 x 1 in.
Joint Ventures Estate Jewelers
Opening Bid: \$625



082 This Life
Gyl Turner
Oil on canvas, 17 1/2 x 13 1/2 in.
Fairhope Arts & Crafts Festival
Opening Bid: \$125



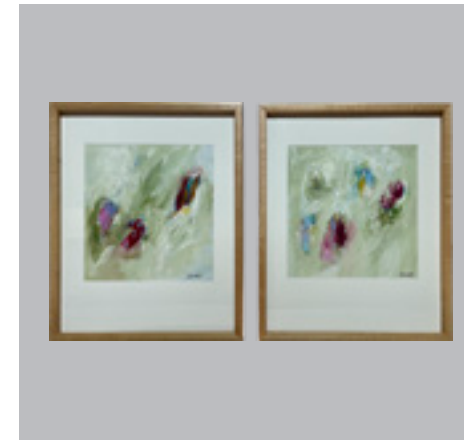
074 Southern Charm I
Vicki Robinson
Oil on panel, 8 x 8 in.
LePrince Fine Art
Opening Bid: \$395



075 White Mountain Evening, 2020
Brett Scheifflee
Oil on panel, 8 x 8 in.
Robert Lange Studios
Opening Bid: \$650



**076 With the Sun & Moon
Shall Soon Still Abide, 2020**
Bethanne Kinsella Cople
Oil on panel, 6 x 10 in.
Principle Gallery
Opening Bid: \$1,050



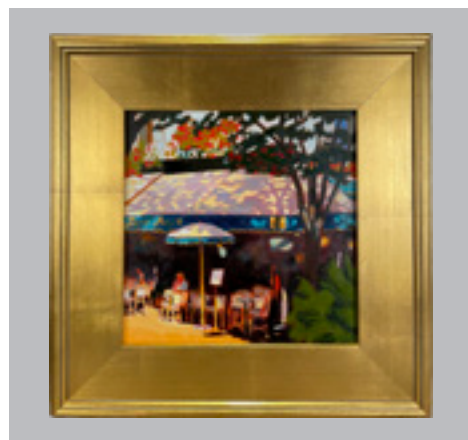
083 Untitled, Set of Two
Jenny Bullard
Acrylic on paper, 17 x 21 in. each
Fairhope Arts & Crafts Festival
Opening Bid: \$150



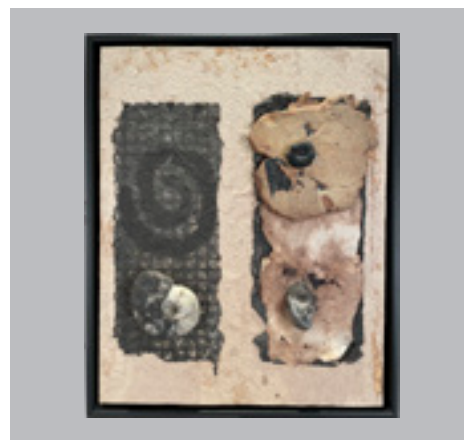
084 Cocktail Ring
Unknown
14k gold, coral, and yellow Moissanite, Size 8
Dover Jewelry
Opening Bid: \$650



085 Corona Diaries, 2020
Allison Stewart
Mixed media on paper, 40 3/4 x 37 1/4 in.
Arthur Roger Gallery
Opening Bid: \$1,900



077 Les Deux Magots, 2020
Rhett Thurman
Oil on canvas, 12 x 12 in.
Rhett Thurman Studio
Opening Bid: \$1,400



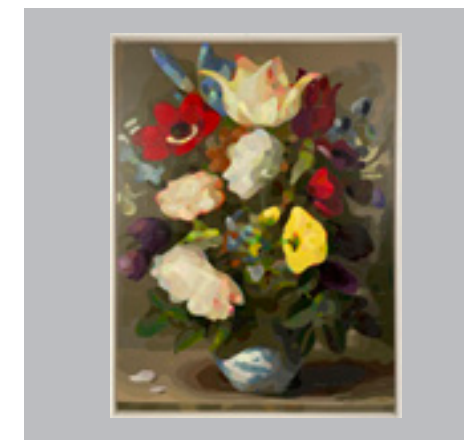
078 Four Maps for Four Pilgrimages, 2019
Arthur McDonald
Handmade paper, fossils, clay, 21 1/2 x 17 1/2 in.
Corrigan Gallery
Opening Bid: \$800



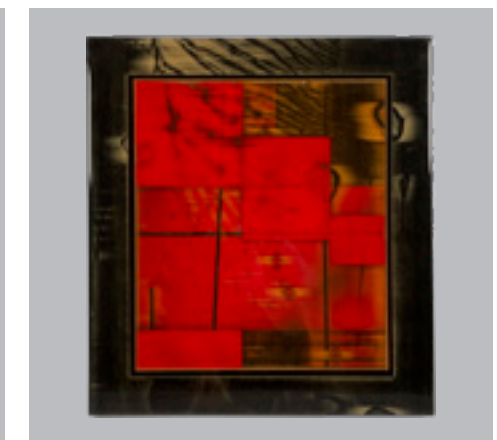
079 Song of the Past, 2019
Arthur McDonald
Handmade paper and antique instrument,
36 1/2 x 24 in.
Corrigan Gallery
Opening Bid: \$1,100



086 Object, 2013
Edward Whiteman
Oil pastel on reconstructed paper,
36 3/4 x 29 1/8 in.
Arthur Roger Gallery
Opening Bid: \$2,500



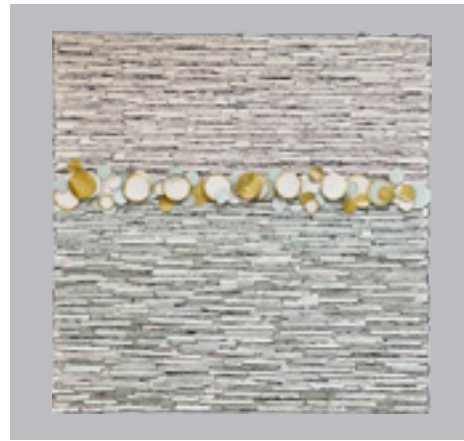
**087 Flowers in a Porcelain
Wan-Li Vase (after Osias
Beert the Elder), 2021**
Carlton Scott Sturgill
Paint chip sample mosaic on panel, 40 x 30 in.
Jonathan Ferrara Gallery
Opening Bid: \$4,400



088 Vicuna
Michael Kessler
Acrylic and resin on panel, 20 x 18 in.
Callan Contemporary
Opening Bid: \$2,200



107 Durblin I / II, 2019
Amanda Talley
Acrylic on paper, 16 1/2 x 14 in.
Studio Amanda Talley Retail: \$2,100
Opening Bid: \$1,400 Min. Incr.: \$100



108 Suspended, 2021
Amber Ivey
Oil on canvas, 48 x 48 in.
Amber Ivey Gallery Retail: \$3,200
Opening Bid: \$2,200 Min. Incr.: \$100



109 Sunset on Horn, 2020
Billy Solitario
Oil on canvas, 9 x 12 in.
Billy Solitario Fine Art Retail: \$900
Opening Bid: \$750 Min. Incr.: \$50

Silent Auction Items

EXPERIENCES

"We don't remember days, we remember experiences."

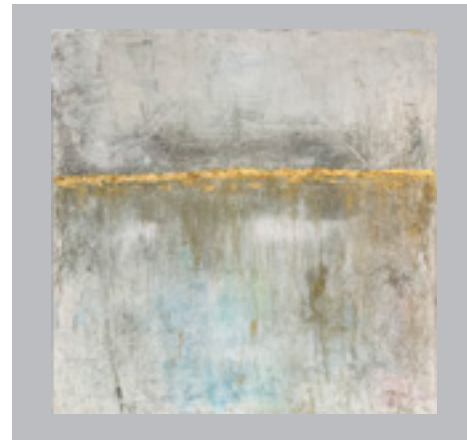
– Cesare Pavese



110 Antique European Pillow
Becky Vizard
Raised gold metallic embroidery,
12 1/2 x 33 1/2 in.
B. Viz Design Retail: \$2,800
Opening Bid: \$1,600 Min. Incr.: \$200



111 Antique Ottoman Pillows (Set)
Becky Vizard
Raised silver metallic embroidery, 19 x 19 in. each
B. Viz Design Retail: \$3,200
Opening Bid: \$1,800 Min. Incr.: \$200
Buy Now: \$3,000



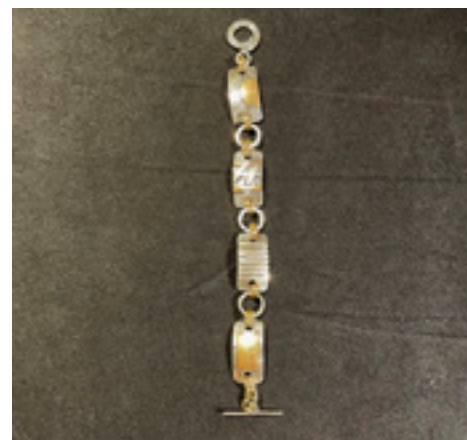
112 Annie's Dream, 2021
Amber Ivey
Oil on canvas, 48 x 48 in.
Amber Ivey Gallery Retail: \$2,500
Opening Bid: \$1,700 Min. Incr.: \$100



113 Untitled
Alexis Walter
Watercolor in Plexiglas, 10 x 10 x 2 in.
Alexis Walter Gallery Retail: \$500
Opening Bid: \$300 Min. Incr.: \$25



114 Untitled
Alexis Walter
Watercolor in Plexiglas, 10 x 10 x 2 in.
Alexis Walter Gallery Retail: \$500
Opening Bid: \$300 Min. Incr.: \$25



115 Handcrafted Artisan Jewelry
Leigh Ann Hurst
Sterling silver, 14k gold filled, and copper,
7 x 1 in.
Fairhope Arts & Crafts Festival Retail: \$250
Opening Bid: \$150 Min. Incr.: \$25



116 Two nights at Willow Point Golf and Country Club

Russell Lands on Lake Martin
Two nights at Willow Point Golf and Country Club for two people: includes pool access, meals, and a pontoon boat cruise on more than 40,000 acres of Lake Martin, the only lake designated as a "Treasured Alabama Lake." Friday night dinner at the Club dining room of your choice; Saturday meals: breakfast at Willow Point Golf and Country Club, lunch at Kowaliga Restaurant, and dinner at Spring House; enjoy breakfast at the Club dining room and finish the weekend with a Sunday afternoon by the pool.

Retail: \$1,800
Opening Bid: \$900
Min. Incr.: \$100



117 Dinner for Ten at Vintage Year Restaurant & Bar

Vintage Year Restaurant & Bar
Enjoy a fantastic four-course dinner for ten people at one of the Capital's favorite dining experiences for decades. Excludes alcohol and gratuity.

Retail: \$1,000
Opening Bid: \$600
Min. Incr.: \$50





118
Beer Flight for Ten

Common Bond Brewers
 Beer flight for ten people, a tour of Common Bond Brewery, and conversation with Brew Master, Andrew McNally.

Retail: \$200
 Opening Bid: \$120
 Min. Incr.: \$25



119
Use of a Historical Suite at the Biscuits Stadium, 2022 Season

Friends of the MMFA
 Enjoy an evening at the Biscuits Stadium with up to 20 of your friends in the luxury of an air-conditioned suite with a bird's-eye view of the game. Custom suite menu available but not included.

Retail: \$750
 Opening Bid: \$450
 Min. Incr.: \$50



120
Use of Mellow Mushroom Party Room for Ten

Mellow Mushroom, Prattville
 Plan a fun pizza party at Mellow Mushroom for a child's birthday celebration and nine of their friends. Includes food and beverages.

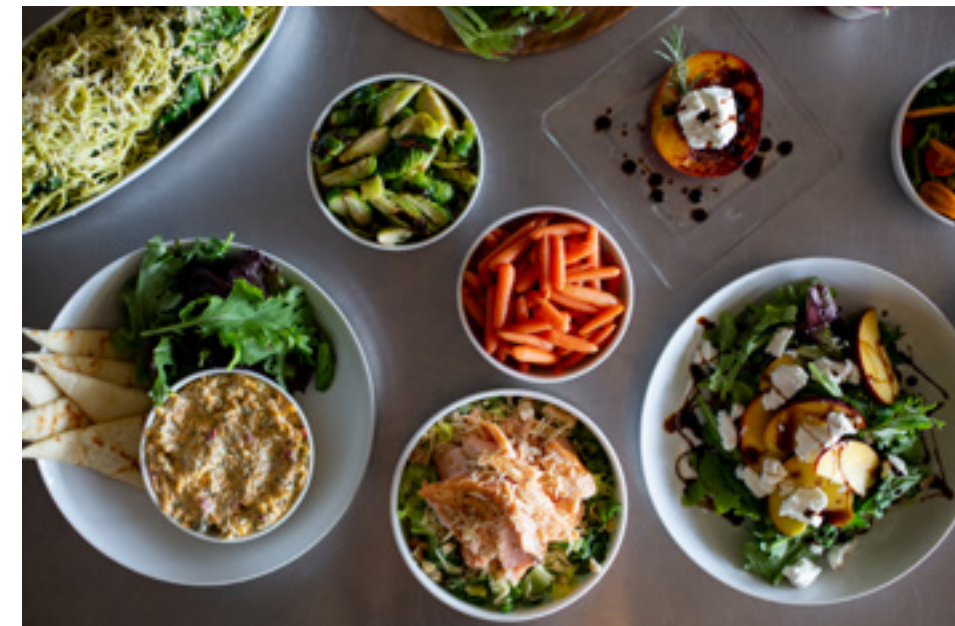
Retail: \$100
 Opening Bid: \$60
 Min. Incr.: \$25



121
Adult Pizza Party with a Beer and Wine Tasting

Pine Bar and Tomatinos
 Plan an adult pizza party in the courtyard between Pine Bar and Tomatinos! Pizza and salad, plus a beer and wine for eight people. Now that sounds like FUN!

Retail: \$450
 Opening Bid: \$275
 Min. Incr.: \$25



122
Wine Lunch for Six at Café Verde

Café Verde, Montgomery Museum of Fine Arts
 Enjoy lunch with your friends at Café Verde and take in the stunning views of the Museum's beautiful Parker Terrace overlooking Newell Lake and Blount Cultural Park. Lunch includes three courses plus hand-selected wine.

Retail: \$350
 Opening Bid: \$200
 Min. Incr.: \$25



123
Cigar and Scotch Tasting at Sanctuary Cigars

Sanctuary Cigars
 Cigar and whiskey experience including a conversation with tobacconist, Miller Clemmons for four people.

Retail: \$400
 Opening Bid: \$240
 Min. Incr.: \$25



Art Auction Planning Committee Members

WITH HUMILITY AND THANKS TO ONE AND ALL
FOR YOUR EXTRAORDINARY SERVICE TO THE MMFA!

1992

Carol Ballard, Co-Chair
Mary Lynne Levy, Co-Chair
Dr. James H. Armstrong
Jane Blount
Dee Coleman
Mark Dauber
May Donnell
Mary Dunn
Mark Froemming
Barbara Gallagher
Linda Garrard
Susan Geddie
Laura Harmon
Micky Ingalls
Matille Johnson
Mary Robin Jurkiewicz
Wanda Marshall
Mary McCollister
Leigh Miller
Caroline Novak
Judy Oliver
Evelyn Paterson
Carol Patton
Gloria Rawlings
Jane Smith
John Walter Stowers
Greg Tankersley
Virginia Weil
Nancy Williams

1994

Gloria Rawlings, Chair
Nicky Armstrong
Carol Ballard
Jane Barganier
Mary Dunn
Ellie Ernst
Corinna Gauntt
Hester Gordon
Matilee Johnson
Debbie McInnis
Kitty Sheehan
Burton Upchurch
Chris Vaughn
Pat Wanglie

1996

Ellie Ernst, Co-Chair
Laura Harmon, Co-Chair
Jane Albritton
Nicky Armstrong
Mary Dunn
Corinna Gauntt
Susan Geddie
Anne Goff
Bil Hitchcock
Brenda Johnson
Marjorie Kohn
Mary Lynne Levy
Deborah Loard
Caroline Novak
Gloria Rawlings
Kitty Sheehan
Pat Wanglie

1998

Nicky Armstrong, Co-Chair
Carol Ballard, Co-Chair
Michelle Anthony
Jennifer Arrington
Jason Arrington
Diana Blount
Ann Boozer
Elizabeth Burt
Lee Burt
Sandra Cawthon
Christi Christie
Eric Christie
Stephanie Crompton
Laura Dockery
Dr. M. Bonner Engelhardt
Anne Franco
Julie Freeman
Jennifer Fruin
Corinna Gauntt
Susan Geddie
Lilla Granger
Trey Granger
Rusty Gregory
Laura Harmon
Erin Hendricks
Lisa Hope
John Hope
Margaret Lowder
Stephanie Martin
Stuart Massey
Allison McCullough
Sted McCullough
Melanie Morris
Karen Northcutt
Kim Odom
Beth Poundstone
Haygood Poundstone
Gloria Rawlings
Lee Sellers
Gloria Simons
Winnie Stakely
Pat Wanglie
Diane Weil

2000

Pat Wanglie, Chair
Katie Anderson
Jennifer Arrington
Jamie Ashurst
Jane Barganier
Nan Barganier
Dr. Pat Budny
Susan Chapman
LuAnn Cobb
Bette Cole
Laura Dockery
Camille Elebash-Hill
Dr. M. Bonner Engelhardt
Anne Franco
Susan Geddie
Charlotte Goodwyn
Leslie Goodwyn
Claire Austin
Hope Harbin



“The things that lies at
the foundation of positive
change, is service to a fellow
human being.”

– Lech Walesa

Laura Harmon
Diane Henig
Carol Hill
Donna Hill
Stacey Hill
Debbie Hobbs
Lucy Jackson
Betty Karle
Marjorie Kohn
Gage LeQuire
Beth Lubin
Lucy Luquire
Stephanie Martin
Allison McCollough
Jane McFadden
Gina Mussafer
Karen Northcutt
Jennifer Pilgrim
Laura Dockery
Gloria Simons
Stacey Stakely
Winnie Stakely
Melissa Tubbs
Bob Vardaman
Diane Weil
Adolph Weil, III

2002

Pat Wanglie, Chair
Katie Anderson
Claire Austin
Nan Barganier
Jane Barganier
Elizabeth Baucom
Dr. Pat Budny
Emily Burwell
Virginia Butler
Mary Cochran
Elizabeth Crum
Laura Dockery
Stephanie Durel
Camille Elebash-Hill
Dr. M. Bonner Engelhardt
Josie Eskridge
Anne Franco
Susan Geddie
Richard Gill
Laura Harmon
Carol Hill
Stacey Hill
Gail Hudgens
Lucy Jackson
Marjorie Kohn

Gage LeQuire
Jennifer Loard
Margaret Lowder
Mary Virginia Mandell
Karen Northcutt
Laura Pace
Phillip Rawlings
Dawn Schloss
Gloria Simons
Ann Stewart
Wendy Sylvest
Nancy Thorington
Melissa Trehern
Melissa Tubbs
Lea Turbert
Bob Vardaman
Adolph Weil, III
Susie Wilson
Kelly Wilson

2004

Anne Franco, Chair
Phillip Rawlings, Co-Chair
Jane Albritton
Nicky Armstrong
Jane Barganier
Bess Blackmon

Dr. Pat Budny
Edith Crook
Debbie Dees
Laura Dockery
Camille Elebash-Hill
Tootsie Emmet
Sister Engelhardt
Benita Froemming
Corinna Gauntt
Richard Gill
Virginia Humphrey
Lucy Jackson
Liza Kaufman
Joan Loeb
Jennifer McConnell
Jane McFadden
Sandra McInnes
Dae Miller
Joan Mitchell
Melanie Morris
Karen Northcutt
Gloria Rawlings
Emilie Reid
Eddie Scott
Gloria Simons
Winnie Stakely
Melissa Tubbs
Lea Turbert
Adolph Weil, III
Winston Wilson

2006

Pat Wanglie, Chair
Jane Albritton
Dr. Gerald Anderson
Jannah Bailey
Carol Ballard
Jane Barganier
Bess Blackmon
Lucie Brittain
Pat Budny
Carol Butler
Lisa Capell
Susan Chapman
Ginny Cumbus
Debbie Dees
Mary Dunn
Camille Elebash-Hill
Tootsie Emmet
Sister Engelhardt
Anne Franco
Benita Froemming
Susan Geddie
Richard Gill
Virginia Humphrey
Dr. Michael Ingram
Lucy Jackson
Kent Jenkins
Liza Kaufman
Beverly McKinney
Michael Meeks
Dae Miller
Joan Mitchell
Kelton Morris
Peggy Mussafer
Dr. Al Newman
Karen Northcutt
Patricia Pinchback
Phillip Rawlings
Gloria Rawlings
Bruce Reid
Emilie Reid
Eddie Scott
Gloria Simons
Winnie Stakely

Melissa Tubbs
Anne Upchurch
Laurie J. Weil, D.V.M.
Winston Wilson
Cindy Wilson
Stuart Yelverton

2008

Pat Wanglie, Chair
Dockery Austin
Claire Austin
Jane Barganier
Tami Brazil
Lucie Brittain
Dr. Pat Budny
Carol Butler
Lisa Capell
Ginny Cumbus
Helena Duncan
Camille Elebash-Hill
Sister Engelhardt
Susan Geddie
Susan Haigler
Darlene Herrick
Fairlie Herron
Debbie Hobbs
Lucy Jackson
Carol Loeb
Margaret Martin
Sally McLendon
Michael Meeks
Dae Miller
Charlotte Mussafer
Karen Northcutt
Patricia Pinchback
Bruce Reid
Eddie Scott
Gloria Simons
Winnie Stakely
Stacey Stakely
Melissa Tubbs
Anne Upchurch
Sherry Weeks
Laurie J. Weil, D.V.M.
Winston Wilson
Sissy Worrell

2010

Pat Wanglie, Chair
Lucy Jackson, Co-Chair
Michelle Anthony
Dockery Austin
Amelia Barnes
Richard Bradford
Pat Budny
Lisa Capell
Susan Chapman
Dee Coleman
Ginny Cumbus
Mary Dunn
Camille Elebash-Hill
Sister Engelhardt
Susan Geddie
Katharine Harris
Brenda Hellums
Debbie Hobbs
Allison Ingram
Lucy Jackson
Gage LeQuire
Lucy Luquire
Cathy Martin
Tammy McCorkle
Lisa Newcomb
Winston Wilson Reese
Bruce Reid
Caroline Rosen
Gloria Simons
Carol Tew
Melissa Tubbs
Florence Tyson
Laurie J. Weil, D.V.M.
Ashley White
Justice Kelli Wise

Lee Sellers
Gloria Simons
Melissa Tubbs
Winston Wilson

2012

Lucy Jackson, Chair
Emilie Reid, Co-Chair
Marion Baab
Jane Barganier
Lisa Capell
Ginny Cumbus
Suzanne Davidson
Mary Dunn
Camille Elebash-Hill
Dr. M. Bonner Engelhardt
Benita Froemming
Susan Geddie
Katharine Harris
Brenda Hellums
Allison Ingram
Lucy Jackson
Katrina Keefer
Charlotte Mussafer
Jeanie Parnell
Winston Wilson Reese
Bruce Reid
Eddie Scott
Laurie J. Weil, D.V.M.
Ashley White
Justice Kelli Wise

2014

Emilie Reid, Chair
Lisa Capell, Co-Chair
Jane Barganier
Jean Belt
LuAnn Cobb
Ginny Cumbus
Suzanne Davidson
Mary Dunn
Camille Elebash-Hill
Dr. M. Bonner Engelhardt
Danetta Evans
Benita Froemming
Susan Geddie
Jason Goodson
Katharine Harris
Brenda Hellums
Debbie Hobbs
Allison Ingram
Lucy Jackson
Gage LeQuire
Lucy Luquire
Cathy Martin
Tammy McCorkle
Lisa Newcomb
Winston Wilson Reese
Bruce Reid
Caroline Rosen
Gloria Simons
Carol Tew
Melissa Tubbs
Florence Tyson
Laurie J. Weil, D.V.M.
Ashley White
Justice Kelli Wise

2016

Lisa Capell, Chair
Allison Ingram, Co-Chair
Glenda Allred
Jane Barganier
Jean Belt
Ward Chesser

Ginny Cumbus
Elizabeth DuBard
Mary Dunn
Camille Elebash-Hill
Dr. M. Bonner Engelhardt
Ashley Gallion
Susan Geddie
Jason Goodson
Katharine Harris
Debbie Hobbs
Charlene Holtsford
Lucy Jackson
Gage LeQuire
Lisa Newcomb
Stephanie Peavy
Phillip Rawlings
Winston Wilson Reese
Bruce Reid
Sheryl Rosen
Gloria Simons
Debbie Spain
Melissa B. Tubbs
Burton Ward
Bonnie Waters
Laurie J. Weil, D.V.M.
Ashley White
Justice Kelli Wise

2018

Allison Ingram, Chair
Ashley White, Co-Chair
Jane Barganier
Jean Belt
Keven Belt
Susan Carothers
Ginny Cumbus
Mary Dunn
Camille Elebash-Hill

Dr. M. Bonner Engelhardt
Scott Franklin
Bruce Freitas
Ashley Gallion
Susan Geddie
Debbie Hobbs
Lucy Jackson
Elliot Knight
Gage LeQuire
Jody McInnes
Lisa Newcomb
Phillip Rawlings
Winston Wilson Reese
Bruce Reid
Emilie Reid
Brooke Reid
Gloria Simons
Trey Sippial
Melissa Tubbs
Laurie J. Weil, D.V.M.
Justice Kelli Wise

2021

Phillip Rawlings, Chair
Winston Wilson Reese,
Chair
Jane Barganier
Keven Belt
Ben Cumbus
Laura Dockery
Will Fuller
Susan Geddie
Trey Hayes
Gage LeQuire
Clay McInnis
Liza Simpler
Todd Strange
Patrick Sullivan



Above: Judge Gene and Winston Wilson Reese at Art Auction 2014. Opposite Page: Johnny (background) and Mary Dunn and Mary McCollister at the first Art Auction in 1992.

Worthy of Taking Note...

OUTSTANDING COMMITTEE MEMBERS

Jane Albritton

- Steering Committee: 1996
- Invitations Committee: 2004, 2006
- Preview Committee Co-Chair: 1996

Carol Ballard

- Selection Committee Chair: 1992, 1994
- Selection Committee: 2006
- Steering Committee: 1992
- Steering Committee Co-Chair: 1998

Jane Barganier

- Selection Committee: 2004, 2006, 2008, 2012, 2014, 2018, 2021
- Steering Committee: 1994, 2000, 2016
- Invitations Committee: 2004
- PR & Marketing Committee: 2002
- Preview Party Committee Chair: 1994
- Live Auction Committee Chair: 2000

Dr. Pat Budny

- Selection Committee Co-Chair: 2006
- Selection Committee Chair: 2008
- Selection Committee: 2000, 2002, 2004
- PR & Marketing Committee: 2002

Lisa Capell

- Steering Committee: 2006, 2008, 2010, 2012, 2018
- Steering Committee Co-Chair: 2014
- Steering Committee Chair: 2016

Ginny Cumbus

- Selection Committee Co-Chair: 2012
- Selection Committee Chair: 2014
- Selection Committee: 2006, 2008, 2010, 2016, 2018

Laura Dockery

- Selection Committee: 2000, 2002, 2004, 2021
- Steering Committee: 1998, 2021
- Preview Party Committee Co-Chair: 1998

Mary Dunn

- Selection Committee Co-Chair: 2014
- Selection Committee Chair: 2016
- Selection Committee: 2010, 2012, 2014, 2016
- Steering Committee: 1992, 1994, 1996
- Invitations Committee: 2006

Camille Elebash-Hill

- Selection Committee Co-Chair: 2010
- Selection Committee Chair: 2012
- Selection Committee: 2004, 2006, 2008, 2014, 2016, 2018
- Invitations Committee: 2006
- PR & Marketing Committee Chair: 2002
- Silent Auction Committee Chair: 2000

Dr. M. Bonner Engelhardt

- Selection Committee Co-Chair: 1998
- Selection Committee Chair: 2000
- Selection Committee: 2002, 2012, 2014, 2016, 2018



“The roots of all goodness lie in the soil of appreciation for goodness.”

– Dalai Lama

Anne Franco

- Selection Committee Co-Chair: 2000
- Selection Committee Chair: 2002, 2004
- Selection Committee: 1998, 2006

Susan Geddie

- Steering Committee: 1992
- Selection Committee Co-Chair: 1996
- Selection Committee Chair: 1998
- Selection Committee: 2000, 2002, 2006, 2008, 2010, 2012, 2014, 2016, 2018, 2021

Laura Harmon

- Steering Committee: 1992
- Steering Committee Co-Chair: 1996
- Selection Committee: 1998, 2000, 2002

Katharine Harris

- Selection Committee: 2012, 2014
- Steering Committee: 2010, 2016
- Invitations Committee Co-Chair: 2010

Lucy Jackson

- Selection Committee Co-Chair: 2016
- Selection Committee Chair: 2018
- Selection Committee: 2010, 2012
- Steering Committee: 2000, 2002, 2004, 2006, 2008, 2014
- Invitations Committee: 2004, 2006, 2008

Gage LeQuire

- Selection Committee: 2000, 2014, 2016, 2018, 2021
- Invitations Committee: 2014
- PR & Marketing Committee: 2002

Karen Northcutt

- Steering Committee: 1998, 2000, 2002, 2004, 2006, 2008, 2010

Phillip Rawlings

- Selection Committee Co-Chair: 2002, 2004, 2018
- Selection Committee Chair: 2006, 2016, 2021

Gloria Rawlings

- Steering Committee Chair: 1992, 1994
- Steering Committee: 1996, 1998, 2004, 2006
- Invitation Committee: 2004, 2006

Winston Wilson Reese

- Selection Committee: 2006, 2008, 2010, 2012, 2014, 2016, 2018, 2021
- Invitations Committee: 2004



Bruce Reid

- Selection Committee Co-Chair: 2008
- Selection Committee Chair: 2010
- Selection Committee: 2006, 2012, 2014, 2016, 2018

Emilie Reid

- Selection Committee: 2014
- Steering Committee Co-Chair: 2012
- Steering Committee Chair: 2014
- Steering Committee: 2016, 2018
- Invitations Committee Co-Chair: 2004, 2006

Eddie Scott

- Steering Committee: 2004, 2006, 2008, 2010, 2012

Gloria Simons

- Artist Relations on Selection Committee: 1998, 2000, 2002, 2004, 2006, 2008, 2010, 2014, 2016, 2018

Winnie Stakely

- Selection Committee: 1998, 2000
- Invitations Committee Co-Chair: 2008
- Invitations Committee: 2004, 2006

Melissa Tubbs

- Steering Committee: 2000, 2002, 2004, 2006, 2008, 2010, 2014, 2018

Pat Wanglie

- Steering Committee: 1994, 1996, 1998
- Steering Committee Chair: 2000, 2002, 2006, 2008, 2010

Laurie J. Weil, D.V.M.

- Selection Committee: 2006, 2008, 2012, 2014, 2016, 2018

Justice Kelli Wise

- Steering Committee: 2014, 2016, 2018
- Invitations Committee: 2012

Above (clockwise from top left): Wynona Wilson, Jane Albritton, and Charlotte Mussafer at Art Auction 2012; Bruce Reid and Dr. Porcia Love at Art Auction 2014; Buster Russell, Diane and John Hall, Mayor Todd Strange, Joe Mussafer, Pat Wanglie, Jane and Jim Barganier, Ben Cumbus, and Sister Engelhardt at Art Auction 2014; Gage LeQuire and Gloria Rawlings at Art Auction 2014. **Opposite Page:** Joan Loeb, Lisa Weil, Emilie Reid, Bess Blackmon, and Mary Lynne Levy at Art Auction 2016.

Montgomery Museum of Fine Arts

Blount Cultural Park

One Museum Drive
Montgomery, AL 36117

Open Tuesday through Sunday

Free Entry + Parking

mmfa.org

[@MontgomeryMFA](https://www.instagram.com/MontgomeryMFA)