

# onEXHIBIT

WINTER | 2012



**MMFA**

MONTGOMERY MUSEUM OF FINE ARTS

# onEXHIBIT

JANUARY | FEBRUARY | MARCH | 2012

## CONTENTS

General Information

Exhibitions and Related Programs

Membership Information

Special Offerings



*On Exhibit* is published quarterly by the Marketing & Public Relations Department of the MMFA. Staff and volunteers provide content. Design/layout by Reid/O'Donahue Advertising.

### Montgomery Museum of Fine Arts

*Wynton M. Blount Cultural Park*

One Museum Drive | Montgomery, Alabama 36117

Phone: 334.240.4333

Fax: 334.240.4384

TTY: 334.244.5752

#### Museum Hours:

Tuesday through Saturday: 10 A.M. to 5 P.M. | Thursday: 10 A.M. to 9 P.M. | Sunday: Noon to 5 P.M.

Closed Mondays, New Year's Day, Veterans Day, Thanksgiving Day, and Christmas Day

E-mail: [museuminfo@mmfa.org](mailto:museuminfo@mmfa.org)

Web Site: [www.mmfa.org](http://www.mmfa.org)



#### Free Admission

#### Museum Store Hours

Tuesday through Saturday: 11 A.M. to 4 P.M. | Sunday: Noon to 5 P.M.

**334.240.4337**

#### Café M Hours

Tuesday through Saturday: 11 A.M. to 2 P.M.

**334.240.4339**

#### Accessibility

The Museum is fully accessible to the disabled. Parking is free.

#### Moving?

Call the Development Department at **334.240.4333**.

# MISSION STATEMENT

## Montgomery Museum of Fine Arts

The mission of the Montgomery Museum of Fine Arts is to collect, preserve, exhibit, and interpret art of the highest quality for the enrichment, enlightenment, and enjoyment of its public.

### ADMINISTRATION

*Mark M. Johnson, Director*  
*Tisha Rhodes, Events Coordinator*  
*Lori Landrum, Director's Secretary*

### CURATORIAL

*Margaret Lynne Ausfeld, Curator of Art*  
*Jennifer Jankauskas, Curator of Art*  
*Michael Panhorst, Curator of Art*  
*Pam Bransford, Registrar*  
*Erin Turnham, Assistant Registrar\**  
*Jeff Dutton, Preparator/Designer*  
*Brad Echols, Preparator*  
*Sarah Puckitt, Collections Information Specialist*  
*Alice Carter, Librarian\**

### DEVELOPMENT

*Katherine Trumble, Development Officer*  
*Jennifer Pope, Development Assistant*

### EDUCATION

*Timothy Brown, Curator of Education*  
*Alice Novak, Assistant Curator of Education,*  
*Adult Programs*  
*Donna Pickens, Assistant Curator of Education,*  
*Studio Programs*  
*Jill Byrd, Tour Coordinator*  
*Anna Parker, Outreach Coordinator\**  
*Charlene Boykin, Education Secretary*

### MARKETING & PUBLIC RELATIONS

*Lara Lewis, Director of Marketing and Public Relations*  
*Haley Rennick, Public Relations Coordinator*  
*Vernell Watts, Receptionist*

### MUSEUM STORE

*Kay Jacoby, Associate\**  
*Tana Shealey, Associate\**  
*Jennifer Lewis, Associate\**

### OPERATIONS

*Steve Shuemaker, Assistant Director for Operations*  
*Janet Carroll, Accountant*  
*Karen Barker, Operations Secretary*

### MAINTENANCE

*Percy Bowman, Building Maintenance Supervisor*  
*Douglas Beachem, Service Maintenance Worker*  
*Willia Flanning, Service Maintenance Worker*  
*Dion Williams, Service Maintenance Worker*

### SECURITY

*Rick Allen, Chief of Security*  
*Damien Barber*  
*Ryan Baugh\**  
*Irease Bowman*  
*Ritchie Burdette*  
*Alfonso Campbell, Jr.*  
*Isaiah Ferguson\**  
*Christine Hall*  
*Charles Harris, Jr.\**  
*Sharon Hasberry*  
*Charles Martz*  
*Thomas Oates*  
*Evelyn Pettis*  
*Rickie Posey*  
*Wilma Robinson\**  
*Kevin Wallace*  
*Elizabeth Watkins*

\*denotes part-time employees

### CITY/ASSOCIATION BOARD OF TRUSTEES

*Polly Hardegree, President*  
*Barrie Harmon, Vice President*  
*Roger Spain, Treasurer*  
*Camille Elebash-Hill, Secretary*  
*Patricia Pinchback, Immediate Past President*  
*Dockery Austin, Patricia Budny, Shirley Calhoun,*  
*Karen Campbell, Lisa Capell, Hannah Chadee,*  
*Guy Davis, Ron Drinkard, Bonner Engelhardt, Ty*  
*Fondren, Dr. Alma Freeman, Susan Geddie, Dr. Ellis Hall,*  
*Katharine Harris, Brenda Hellums, Ann Hubbert,*  
*Daniel Hughes, Lucy Jackson, Pete Knight, Joan Loeb,*  
*Kerry Mallory, Richard Neal, Dr. Alfred Newman,*  
*Larry Puckett, Winston Wilson Reese, Dee Russell,*  
*Adam Schloss, Gloria Simons, Ben Stakely,*  
*Winifred Stakely, Melissa Tubbs, and Dr. Laurie Weil*

## FROM THE DIRECTOR

Dear Members,

Another new year is upon us, and that means that Art Auction 2012 is just around the corner. This year's event is shaping up to be one of the most exciting in years. There's quite a selection in every price range for both the emerging collector and the connoisseur. Congratulations to our hard working Art Auction volunteers for creating this important fundraising event to support future acquisitions, exhibitions, and educational programs. Buy your tickets now for two of the best parties in town on February 23 and 25.



Then, in March, the Museum will present a pair of spectacular painting exhibitions. Lois Mailou Jones, an African-American artist, illustrator, and educator produced a remarkable volume and diversity of painting styles in a lifetime that almost spanned the entire 20<sup>th</sup> century. Seventy oil paintings will document a wide range of influences and a freedom of style from impressionistic to abstract.

The companion exhibition focuses on the work of Dale Nichols, a mid- 20<sup>th</sup> century, midwestern regionalist. His canvases feature the artist's memories of rural farm life with big skies and expansive landscapes from his native Nebraska.

I look forward to seeing you in the galleries,

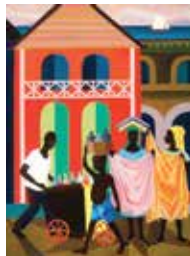
**Mark M. Johnson**  
Director



## SAVE THE DATE!

**Director's Circle Dinner, Monday, April 16, 2012**

The MMFA's annual celebration of its major donors



**Lois Mailou Jones, *Street Vendors*, 1978, acrylic on canvas,  
Courtesy of Lois Mailou Jones Pierre-Noël Trust.**

# CALENDAR OF EVENTS 2012

## JANUARY

- 1 New Year's Day—Museum Closed
- 4 Artists in Action- Noon
- 8 Sundays@ 1- 1 PM
- 10 Young Artists- 1 PM
- 11 Ekphrasis- Noon
- 12 Drawing Fitness- 6 PM  
Art Ed Central- 4 PM
- 14 Portrait Painting Workshop- 10 AM
- 15 Sundays@ 1- 1 PM
- 18 Tales for Tots- 10:30 AM  
After School Art- 3:45 PM
- 19 Di"Vine" Lunch- After School Art II- 4 PM; Apps for Getting Things Done- 6 PM
- 21 Portrait Painting Workshop- 10 AM; Artists in Action- Noon
- 22 Sundays @1- 1 PM  
Folk Art Festival- 2 PM
- 24 Young Artists- 1 PM
- 25 After School Art- 3:45 PM
- 26 After School Art II- 4 PM  
Drawing Fitness- 6 PM  
ARTtalk- 6 PM
- 29 Encaustic Painting Workshop II- 1 PM  
Sundays @1- 1 PM  
Jazz Jams- 2 PM

## FEBRUARY

- 1 Artists in Action- Noon  
After School Art- 3:45 PM
- 2 After School Art II- 4 PM  
Drawing Fitness- 6 PM
- 5 Sundays@ 1- 1 PM
- 7 Young Artists- 1 PM
- 8 Ekphrasis- Noon
- 9 Art Ed Central- 4 PM  
Art of Framing- 6 PM
- 12 Art Auction- Noon  
Sundays@ 1- 1 PM; Cultural Heritage Family Day- 2 PM
- 14 Valentine's Day
- 15 Tales for Tots- 10:30 AM  
After School Art- 3:45 PM
- 16 After School Art II- 4 PM  
Drawing Fitness- 6 PM
- 18 Artists in Action- Noon
- 19 Art Auction- Noon  
Sundays @1- 1 PM
- 21 Young Artists- 1 PM
- 22 After School Art I- 3:45 PM
- 23 After School Art II- 4 PM  
Silent Art Auction- 6:30 PM
- 24 Landscape Painting Workshop- 1 PM
- 25 Landscape Painting Workshop- 9 AM  
Live Art Auction- 6 PM
- 26 Sundays@1- 1 PM  
Jazz Jams- 2 PM
- 29 After School Art I- 3:45 PM

## MARCH

- 1 Evening with Curator- 5:30 PM  
Drawing Fitness- 6 PM
- 4 Sundays@1- 1 PM
- 6 Young Artists- 1 PM
- 7 Artists in Action- Noon  
After School Art 1- 3:45 PM
- 8 After School Art II- 4 PM  
Art Ed Central- 4 PM  
Drawing Fitness- 6 PM
- 10 All About Color- 10 AM
- 11 All About Color- Noon  
Sundays@1- 1 PM
- 14 Ekphrasis- Noon
- 15 Opening Reception- 5:30 PM  
Lecture- 7 PM
- 17 Artists in Action- Noon
- 18 Sundays@ 1- 1 PM  
Spring Fling- 2 PM  
Jazz Jams- 2 PM
- 20 Young Artists- 1PM
- 21 Tales for Tots- 10:30 AM  
After School Art- 3:45 PM
- 22 After School Art II- 4 PM  
ARTalk- 6 PM
- 25 Sundays@1- 1 PM
- 29 World of Dale Nichols- 5:30 PM

## IN THE GALLERIES

### *The Art of Seating: Two Hundred Years of American Design*

Through January 15, 2012

*The Art of Seating* presents a survey of exceptional American chair design from the early 19th century to the present day. The exhibition includes chairs by John Henry Belter, George Hunzinger, Herter Brothers, Stickley Brothers, Frank Lloyd Wright, Charles & Ray Eames, Isamu Noguchi, Frank Gehry, and others.

*The Art of Seating* is developed by the Museum of Contemporary Art, Jacksonville, in collaboration with the Jacobsen Collection of American Art and toured by International Arts & Artists, Washington, D.C.

The Museum is grateful to Aliant Bank and Doug's 2 Salon & Spa for their corporate sponsorship of *The Art of Seating*.



The Museum is also grateful to The James W. Wilson, Jr. and Wynona W. Wilson Family Foundation for their individual support of *The Art of the Seating*.



Warren McArthur, Jr. (1885-1961), *Sling Seat Lounge Chair*, c. 1935, Photo by Michael Koryta & Andrew Van Styn



**ALIA NT BANK**

### *1934: A New Deal for Artists*

Through January 15, 2012

In the face of tough economic times, American artists celebrated our nation's drive and determination to persevere in the face of adversity. This exhibition recognizes the 75<sup>th</sup> anniversary of the Public Works of Art Program, a New Deal effort to employ artists during the Great Depression. Lasting only six months, from mid-December of 1933 to June of 1934, the program encouraged participating artists to depict the American scene, though they were free to depict any subject they wished. This collection of works from the Smithsonian American Art Museum highlights some 50 works, ranging from portraits to city scenes, and landscapes to images of rural life. They are a lasting visual record of America at a specific time, and preserve the country's determination to build a brighter future.

The Museum is grateful to Hyundai Motor Manufacturing Alabama, AlaTrust, and River Bank & Trust for their corporate sponsorship of *1934: A New Deal for Artists*.



The Museum is also grateful to Loree and Owen Aronov, Terri Aronov, Bobbi and Ferrell Patrick, and Burke Schloss for their individual sponsorship of *1934: A New Deal for Artists*.



Beulah R. Bettersworth, *Christopher Street, Greenwich Village*, 1934, oil on canvas, Smithsonian American Art Museum, Transfer from the U.S. Department of the Interior, National Park Service



## IN THE GALLERIES cont'd

### ***Loïs Mailou Jones: A Life in Vibrant Color***

March 17 to June 10, 2012

This exhibition illuminates the life and work of Loïs Mailou Jones (1905-1998), an African-American artist, illustrator, and educator who produced a substantial oeuvre of colorful paintings while teaching art at Howard University for 47 years.

This exhibition of 70 works surveys the vast sweep of Jones's seventy-five years as a painter stretching from late Post-Impressionism to a contemporary mixture of African, Caribbean, American, and African-American iconography, design and thematic elements. Jones received recognition in her lifetime through exhibitions and representation in important museum collections. Her work remains a substantial contribution to American art. *Loïs Mailou Jones* is organized by the Mint Museum of Art, Charlotte, NC, in collaboration with the Loïs Mailou Jones Pierre-Nôel Trust, and toured by International Arts and Artists, Washington, DC.



Loïs Mailou Jones, *Paris Rooftops, Montmartre, 1965*, acrylic on canvas, Collection of Robert and Elaine Jones

The Museum is grateful to BB&T Bank for their corporate sponsorship of *Loïs Mailou Jones: A Life in Vibrant Color*.



The Museum is also grateful to Linda and Larry Puckett, Laura and Barrie Harmon, and Dr. Marla Wohlman and Mr. John Crews for their individual support of *Loïs Mailou Jones: A Life in Vibrant Color*.

### ***Dale Nichols: Transcending Regionalism***

March 17 through June 10, 2012

Artist Dale Nichols was born in David City, Nebraska on July 13, 1904. He studied at Chicago's Academy of Fine Arts, and remained in Chicago for approximately 15 years.

Nichols, succeeding Iowa artist Grant Wood, was art editor of the *Encyclopedia Britannica* from 1942 to 1948, and in 1930-40 served as Carnegie visiting professor to the University of Illinois. As an early champion of good art in advertising and illustration, he created artwork for direct-mail industrial advertising in the 1930s and 40s. In 1935, his book elaborating his theories of art, *A Philosophy of Esthetics*, was published, and in 1957 he completed his book, *Figure Drawing*, published by Watson-Guptill.

Nichols's primary subjects were evocations of the farm life he experienced in his early years in Nebraska. He stated, "I feel that an artist paints best what he has been exposed to during his youth. I think my memory paintings of my home state may be my only creations that I sign with full confidence."



The Museum is grateful to Corinna and Barry Wilson, Winifred and Charles A. Stakley, and Dawn and Adam Schloss for their individual support of *Dale Nichols: Transcending Regionalism*.



Dale Nichols, *January, 1935*, oil on canvas, Williams College Museum of Art, Gift of Cole Porter

### ***Birds of the Enlightenment: Predecessors and Rivals of J.J. Audubon***

March 17 to June 10, 2012

John James Audubon (1785-1851) completed his monumental publication, *Birds of America*, in 1838. He was, however, by no means the first to produce crisp and accurate images of birds for sale to an increasingly curious public. In many ways his project was the culmination of a trend begun in the late Italian Renaissance, around 1560, to accurately document and classify the apparent chaos of life that surrounds mankind in the natural world. Dozens of publications organizing and describing the natural world appeared from the middle of the 16th century to the end of the 18th. These are the early years of scientific inquiry, best known as The Enlightenment. On voyages of discovery from the 17th to the 19th centuries, explorers sought out new species of animals and collected specimens or drawings that would be brought home to eager colleagues ready to carefully delineate new species, make engravings or lithographs, and publish them for presentation to the public all across Europe and America.



Unnamed artist, *Chinese Teal*, Charles Brightly and John Childs, *The Natural History of Birds*, Bungay (UK); Brightly & Childs Publishers, 1815, First Edition.

This exhibition from the personal collection of Professor Thomas Puryear of Dartmouth, Massachusetts, includes original bird illustrations from some 75 different publications that involved more than twice that many artists, editors, engravers, writers, printers, and illustrators who gave direction to this endeavor of cataloguing the natural world. In conjunction with the exhibition, the MMFA will introduce a related new acquisition, a plate from Audubon's *Birds of America* depicting the *Black-Bellied Darter*, published by Robert Havell in about 1836.

The exhibition is organized by the Montgomery Museum of Fine Arts in cooperation with Dr. Thomas Puryear.

### ***Tornadoes: A Memorial to Victims of the April 27, 2010 Storms***

March 10 through June 3, 2012

In commemoration of the victims of the devastating storms that ravaged Alabama and the South on April 27, 2010, the MMFA will install a small exhibition of art inspired by tornadoes, twisters, and windstorms. In the wake of the storms, and as a memorial to the victims, California artist David Maxim contacted the museum and offered to donate six drawings from a series executed between 2004 and 2006. Art from the museum's permanent collection by sculptor/printmaker Ke Francis and a work by glass artist Ginny Ruffner will also be included.



David Maxim, *Tornado F*, January 2005, Pastel, charcoal, graphite and water wash on laid paper, Gift of the artist, 2011.10.1



## STUDIO CLASSES

### PRESCHOOL

(ages 2 – 6, with an adult partner)

#### *Tales for Tots*

Each month this FREE program for young children and their families connects special stories with art in the Museum.

**Instructors:** Education Staff and Docents

**Time:** 10:30 to 11 A.M.

**Wednesdays:** January 18, February 15, March 21

#### *Young Artists*

These fun classes for preschoolers with an adult partner help increase eye-hand coordination and creativity. Each class will explore beginning drawing, painting, ceramics or sculpture, working with a variety of art materials. Sign up for one class or a series of classes. Classes are limited to 10 children and their parents.

**Instructors:** Gloria Simons and Margaret Barber

**Time:** 1:00 to 1:45 P.M.

**Tuesdays:** January 10, 24; February 7, 21; March 6, 20

**Cost:** \$8 members; \$12 non-members for each class; \$40 members; \$60 non-members for the series of six classes

### CHILDREN & YOUTH

(ages 6 to 13)

#### *After School Art I* (ages 6 to 8)

During these weekly classes, students will explore different art techniques, elements of art and principles of design related to art in the Museum. They will use a variety of art materials to create drawings, paintings, ceramics, and sculpture, including oil and chalk pastels, colored pencils, acrylic, watercolor, and tempera paint, clay and paper maché. All supplies are provided. Class size is limited to 12 students.

**Instructors:** Donna Pickens & Education staff

**Time:** 3:45 to 4:45 P.M.

**Wednesdays:** January 18, 25; February 1, 15, 22, 29; March 7, 21; April 4, 18, 25; May 9

**Cost:** \$145 members; \$205 non-members for the series of 12 classes

#### *After School Art II* (ages 9 to 13)

This series of weekly classes for upper elementary and junior high students offers more advanced art techniques and principles of design, in connection with works of art and exhibitions in the Museum. Lessons will include a variety of art materials and techniques, such as drawing with pen and ink, colored pencils, oil and chalk pastels; painting with acrylics and watercolors; creating mixed media and collaged works of art; sculpting with clay, wire and paper maché. All supplies are provided. Class size is limited to ten students.

**Instructors:** Donna Pickens & Education staff

**Time:** 4 to 5 P.M.

**Thursdays:** January 19, 26; February 2, 16, 23 March 8, 22; April 5, 19, 26; May 3, 17

**Cost:** \$145 members; \$205 non-members for the series of 12 classes

### ADULT CLASSES AND WORKSHOPS

#### *Drawing Fitness*

Back by popular demand, Russell Everett will offer a different drawing project each week. If you've always wanted to learn to draw, this class will teach basic techniques. Participants with more experience will be challenged by more difficult projects. Sign up for one class or a series of classes!

**Instructor:** Russell Everett

**Time:** 6 to 8 P.M.

**Thursdays:** January 12, 26; February 2, 16; March 1, 8

**Cost:** \$20 members; \$30 non-members for each class; \$100 members; \$150 non-members for the series of six classes

#### *Apps for Getting Things Done*

Do you want to learn more about what you can do with your iPhone and iPad? This two-hour workshop will focus on apps that are used to create content for a variety of subject areas.

**Instructor:** Tim Brown, Curator of Education

**Time:** 6 to 8 P.M.

**Thursday:** January 19

**Cost:** \$15 members; \$25 non-members

## STUDIO CLASSES cont'd

### *Portrait Painting Workshop*

Craig Alan Carlson, a nationally recognized portrait artist with over 500 commissioned portraits, will show you the step-by-step process of how you can paint the human head. Craig will begin the workshop with a two-hour demonstration, painting a portrait from a live model. Then he will work with each participant in the workshop, teaching how to paint from a model in the “alla prima” technique. You won’t want to miss this unique opportunity! Class size is limited to ten participants.

**Instructor:** Craig Carlson

**Time:** 10 A.M. to 5 P.M.

**Saturdays:** January 14, 21

**Cost:** \$200 members; \$245 non-members for the series of two workshops

### *Encaustic Painting Workshop II*

If you missed the last workshop exploring this exciting technique of mixing wax with pigment, you will want to reserve a space in this class! Award winning Auburn University professor and artist Zdenko Krtic will teach techniques of transferring photos, drawings and other printed materials, and using collage, incising, and other methods to create interesting layered encaustic compositions. Most supplies provided. Class size is limited to ten participants.

**Instructor:** Zdenko Krtic

**Time:** 1 to 5 P.M.

**Sunday:** January 29

**Cost:** \$75 members; \$95 non-members

### *Landscape Painting Workshop*

As a follow-up of his popular still life painting workshop last year, nationally known artist Christopher Groves will offer his expert advice about painting landscapes in the classical tradition. Sign up for his demonstration on Friday and/or come and paint on Saturday. Class size on Saturday is limited to 12 participants.

**Instructor:** Christopher Groves

**Time:** 1 to 5 P.M.; Friday, February 24 (Artist demo)  
9 to 4 P.M.; Saturday, February 25  
(Painting workshop)

**Cost:** \$15 members; \$25 non-members for the Friday demonstration; \$130 members; \$175 non-members for the Saturday workshop

### *All About Color!*

For the beginning acrylic or oil painter to the most advanced, this workshop will aid you in mixing the colors you want. Durinda will guide you through exercises and fool-proof color recipes. The workshop will cover seeing and describing color, the value of values, using the color wheel, creating moods with color, and mixing those problematic grays and greens. Participants will create small studies to go with each exercise, and can bring previously painted works of art that need “color correcting”. Durinda Cheek is the Visual Arts Director for the Alabama Institute for Education in the Arts, and her artwork is exhibited in galleries throughout the southeast.

**Instructor:** Durinda Cheek

**Time:** 10 A.M. to 5 P.M.; Saturday: March 10  
12 to 5 P.M.; Sunday: March 11

**Cost:** \$225 members; \$270 non-members for the two-day workshop

## HATS OFF TO OUR EDUCATION SPONSORS!



**W.K. Upchurch  
Construction  
Co., Inc.**



**Central Alabama Community Foundation;  
Susan and Robert Runkle;  
Drs. Laurie Jean Weil  
and Tommy Wool; and Angie  
and Philip Young**

## EDUCATION



### ARTWORKS Corridor Exhibitions

Discover how your students may exhibit their artwork at the Museum. Student exhibitions in the ARTWORKS Corridor are designed to go hand in hand with art in the galleries. Detailed guidelines and entry forms are available by request. A jury of art professionals selects works for each show. Contact Donna Pickens, 334.240.4363 or dpickens@mmfa.org for more information.

### ON VIEW NOW!

#### *Fabulous Folk Art*

Exhibition Connection: Works by Self-Taught Artists from the Montgomery Museum of Fine Arts Permanent Collection

Taking their inspiration from Alabama artists, such as Bill Traylor, Mose Tolliver, Sybil Gibson, Bernice Sims, Jimmy Lee Sudduth, and Charlie Lucas, students from kindergarten through high school ages were very inventive with their use of materials for this corridor exhibition. They used traditional as well as unconventional media (such as cardboard, aluminum foil, recycled materials, fabric, nuts and bolts, etc.) to create mixed media paintings and sculptures.

#### *Call for Entries:*

##### *Color Vibrations*

**Exhibition Connection:** *Loïs Mailou Jones: A Life in Vibrant Color*

**Works Due:** Friday, March 2, 2012

**Exhibition Dates:** March 17 – June 10, 2012

**Eligibility:** third grade through high school

#### **Project:**

Create vibrant color compositions that combine figures with symbols, patterns, and designs representative of the multi-cultural mix that is America today. Use any 2-D drawing and/or painting media, including collaged and stamped elements.

#### **Size:**

Entries may be no larger than 18" x 24", although they may be smaller than this size. Entries on paper may be matted, mounted, or framed. Please use only white or off-white mats. Works on canvas should have the sides of the canvas painted or be framed. Artwork that is not matted or framed will be displayed in the Museum's plexiglass frames.

 **REGIONS** Artworks Corridor Exhibitions are sponsored by Regions Bank.

## EDUCATION

### FAMILY PROGRAMS (all ages welcome)

---

Bring the entire family to these FREE Museum programs! Families will work as a team in the studios to create fun “make and take” art projects related to temporary exhibitions in the galleries, or to works in the Museum’s Permanent Collection.

#### *Folk Art Festival*

**Sunday, January 22, 2012 – 2 to 4 P.M.**

View folk art from the permanent collection and create “earth” paintings and sculptures from recycled materials.

#### *Cultural Heritage Family Day*

**Sunday, February 12 – 2 to 3:30 P.M.**

Celebrate the diversity and richness of our nation and enjoy poetry, art, and dance in this fun family event.

#### *Spring Fling*

**Sunday, March 18 – 2 to 4 P.M.**

Marvel at the vibrant artwork of Lois Mailou Jones and the exhibition of *Birds of the Enlightenment*. Then add your unique hand-made bird to the Museum “tree” and create patterned works of art in the studios.

#### *Sundays at One*

Free docent-led tours every Sunday at the Museum at 1 P.M.

#### *Special Focus: Art Auction 2012*

**Sunday, February 12 and 19**

Items from the Museum’s Art Auction will be highlighted from Noon to 2 P.M. Please drop in to learn more.

#### *ARTtalk 2012*

Get an up-close look at artists, their work and the creative process in this unique program, designed for artists in the area, as well as those interested in art. Six times a year, artists have the opportunity to bring a work of art to the Museum, show it to other artists and those interested in art, and have friendly feedback about the work. Signing up for ARTtalk reserves a space in all six meetings, with or without artwork.

**Time:** Thursdays: 6 to 7:30 P.M.

**Dates:** January 26, March 22, May 24, July 26, September 27, November 29

**Location:** Museum conference room

**Cost:** \$20 for Museum or Montgomery Art Guild Members for the series of six, \$35 for non-members

E-mail Donna Pickens for reservations: [dpickens@mmfa.org](mailto:dpickens@mmfa.org) or call **334.240.4363**.

# EDUCATION

## Colors of the City Puppet Show Merriment

Kindergarteners enjoyed seeing puppets come to life during MMFA's annual puppet show, *Colors of the City*. The memorable characters Roy and Violet along with the Cool City Band lead children into a world of colors and shapes, texture and music, with a dose of laughter mixed in.

*Colors of the City* was followed by a mini tour of the galleries called *Peekaboo Street*. Both incorporated learning techniques in the arts. Free admission was offered to approximately 2600 Montgomery Public Schools Kindergarteners during March.

Not a part of the Montgomery Public School System? Never fear, *Colors of the City* and *Peekaboo Street* will be available to the public in April for children 3 to 6 years of age. Two shows will be held each day on April 11, 12, and 13 at 9:30 and 11:00 A.M. This is a reservation only program and is free. Please contact Jill Byrd at 240-4359 for more information or fill out the registration form shown on this page.

## Call to Inspire

Inspire a young child by participating as a puppeteer or *Peekaboo Street* guide at the Montgomery Museum of Fine Arts. Awaken your inner joy as you experience young participants delight as they learn about colors, shapes, texture and music.

The *Colors of the City* Puppet Show and *Peekaboo Street* tour is offered to Montgomery Public School System Kindergarteners in March and then to preschool-age children in April. *Peekaboo Street*, a mini-tour of the galleries, is held directly after the puppet show. There's still time to sign up as a puppeteer or *Peekaboo* guide for the April shows! For more information contact Jill Byrd at 334.240.4359.



The Museum is grateful to Whitney Bank for their corporate sponsorship of 2012 Peekaboo Street and Puppet Show.



The Museum is also grateful to Winifred and Charles A. Stakely for their individual sponsorship of 2012 Peekaboo Street and Puppet Show.

**Puppet Show & Peekaboo Street Reservation Form • April 11, 12, and 13, 2012 | 9:30 A.M. and 11:00 A.M.**

Fax completed form to **334.240.4384**, or Mail to: **Puppet Show**, MMFA, P.O. Box 230819, Montgomery, AL 36123-0819

- Yes! I want to make reservations for the Puppet Show!
- No, I'm not interested in these programs right now, but please keep our school on your mailing list.

School/Individual Name: \_\_\_\_\_ Phone: \_\_\_\_\_

Teacher's Name: \_\_\_\_\_ Other Phone: \_\_\_\_\_

School/Individual Address: \_\_\_\_\_

City, State, Zip \_\_\_\_\_

Total number of seats needed (#children + #adults) \_\_\_\_\_

Date/time requested: First choice \_\_\_\_\_ Second choice \_\_\_\_\_

**Free Peekaboo Street mini-tour following the puppet show:** Yes! Please make reservations for #\_\_\_\_\_ to attend the tour.

**Please note: ARTWORKS is not available on Puppet Show dates.**

## EDUCATION

### Museum Outreach

Once again, the MMFA, in partnership with the City of Montgomery Weed & Seed Initiative, has been graciously awarded a grant from the Alabama State Council on the Arts. This grant will be used throughout the 2011-2012 year to provide after school art classes at E.D. Nixon Community Center (formerly Goode Street Community Center) for both the after-school program and the older Teen Leadership Group, and also at the Montgomery Housing Authority's Cleveland Court Community Center.

The fall's programming was based on the exhibitions *1934: A New Deal for Artists* and *The Art of Seating*. In the weekly art classes, students were introduced to concepts such as the illusion of depth, one-point perspective, and the difference between two-dimensional and three-dimensional objects. In addition, Montgomery artist Aimee Harbin worked with the students to draw and paint their own cityscape using acrylic paints. The museum also assisted the TLC group in putting on a Halloween festival for their fellow siblings and neighbors. The Museum provided the art activity and the overall turnout was very good!

This winter's series of art classes at both centers will be based on works of art in the Museum's Permanent Collection and will emphasize drawing and painting techniques using a variety of media.

 Outreach Programs are sponsored by Wal-Mart.

---

### Teacher Workshops

Art Ed Central, a regional division of the Alabama Art Education Association, has returned to meeting at the Museum. This monthly meeting offers an opportunity for teachers and guest artists to share lesson plan ideas, view art in the Museum's galleries, create hands-on art projects, and network with other professionals.

The meetings for 2012 are on the following Thursday afternoons, from 4 to 5:30 P.M.:  
January 12, February 9, March 8, April 12, and May 10

The MMFA Education Department and AAEA District Representative Bee Lee Tullos from the Montgomery Academy are co-sponsors of these exciting events. To reserve a space, call **334.240.4363** or email [dpickens@mmfa.org](mailto:dpickens@mmfa.org).

---

### AP Art History Course 2012-2013

*Montgomery area High School Juniors and Seniors*

The Montgomery Museum is seeking applicants for the 2012/2013 AP Art History program. The class meets daily at 7:30 AM in the Museum library and provides students the chance to explore works of art from a variety of world cultures from prehistoric times to the present. Participants have the opportunity to share ideas and experiences with students from other local schools and to encounter original works of art in Montgomery, Birmingham, and Atlanta. The challenging AP Art History course of study is the perfect foundation for a life-long love of museums and fine art, and provides a broad introduction to the connections between art and history. The world looks different after an introductory course in art history, and this is one of a few in the Montgomery area open to high school students. Interested students can contact [anovak@mmfa.org](mailto:anovak@mmfa.org) or visit [mmfa.org](http://mmfa.org) for an application.

# EDUCATION

## ADULT PROGRAMS

---

### ***The Art of Framing***

Thursday, February 9, 6 to 7:30 P.M.

Museum Galleries

Co-hosted by the Montgomery Art Guild

Join Curator Michael Panhorst and Artist and Educator Donna Pickens for a discussion of matting and framing paintings, prints, drawings, and photographs for juried exhibitions and gallery spaces. The program will explore how matting and framing choices can affect the viewing experience. The program is offered in conjunction with the Montgomery Art Guild. The next Montgomery Art Guild exhibition at the Museum will be held Spring 2013.

### ***Evening with the Curator***

Old Master Prints from the Museum's Collection

Thursday, March 1, 5:30 P.M.

Weil Print Room

The second in a series of discussions of Old Master Prints in the Weil Print Room, this evening will offer the chance to continue to explore the impact of printmaking in the Renaissance and beyond. Works on view will include those of the German artists Martin Schongauer and Albrecht Altdorfer, Lucas van Leyden of Holland, the Italian Andrea Mantegna, and Jusepa di Ribera of Spain.

### ***Lois Mailou Jones: A Life in Vibrant Color***

Thursday, March 15, 7 P.M.

Wilson Auditorium

Carla Hanzal of the Mint Museum of Art in Charlotte will be present to celebrate the opening of the exhibition she curated, *Lois Mailou Jones: A Life in Vibrant Color*. Following the reception, join us for the lecture. Hanzal is deeply knowledgeable about the colorful paintings and diverse styles of the 75 year career of this significant American artist and teacher.

### ***The World of Dale Nichols***

March 29, 5:30 P.M.

Gallery Talk

Explore the works in *Dale Nichols: Transcending Regionalism* in this gallery discussion with Assistant Curator of Education Alice Novak. Dale Nichols created fine art for advertising and illustration in addition to publishing his theories of art. However, Nichols is best known for his agrarian paintings of his home state, Nebraska.

---

## Save the Date

### ***Audubon's Birds of America***

April 12, 6 to 7 P.M. | Orientation Circle | Hosted by Tim Brown

In celebration of the special exhibition *Birds of the Enlightenment*, Tim Brown, Curator of Education, will talk about the career of John James Audubon and the creation of his famous publication, *Birds of America*.

### ***Symposium on the Life and Works of Bill Traylor***

April 14 | Wilson Auditorium

## EDUCATION

### Ekphrasis: A Monthly Book Club about Art

---

■ ***Seven Days in the Art World*** by Sarah Thornton (nonfiction)

**Wednesday, January 11, Noon to 1 P.M.**

Sarah Thornton, a contributor to Artforum.com and *The New Yorker*, presents an astute and often entertaining ethnography of this status-driven world. Each of the seven chapters is a keenly observed profile of that world's highest echelons: a Christie's auction, a critique session at the California Institute of the Arts and the Art Basel art fair.

■ ***Dancing for Degas: A Novel*** by Kathryn Wagner

**Wednesday, February 8, Noon to 1 P.M. (fiction)**

From Wagner's debut, a fictional portrait of an aspiring ballerina who inspires famous works of art by Edgar Degas, a living picture emerges of dancers at the turn-of-the-20th-century Paris Opera.

■ ***Matisse and Picasso: The Story of Their Rivalry***

by Jack Flam (nonfiction)

**Wednesday, March 14, Noon to 1 P.M.**

The parallel lives of two compelling and competitive artists and their recurrent engagements with desire and mortality.

### SAVE THE DATE

---

■ ***The Lost Painting*** by Jonathon Harr (fiction)

**Wednesday, April 11, 2012, Noon to 1 P.M.**



# MEMBERSHIP

## Flimp Festival 2012

**Saturday, May 5th**

The MMFA is seeking volunteers for the 23<sup>rd</sup> annual Flimp Festival, which will take place on Saturday, May 5, 2012. We are looking for energetic volunteers who are willing to help out in all areas of the festival. For more information or to volunteer, please call Haley Rennick at 334.240.4349.

---

## FLIMP Chalk Art Competition

**May 4 and 5, 2012**

The annual FLIMP Chalk Art Competition will be held all day May 4 and the morning of May 5, 2012 before the FLIMP Festival begins. Chalk artists of all ages are invited to create vivid works of art on the Museum's parking lot, and the MMFA provides materials for all who register on time. During FLIMP, visitors delight in the chalk creations, and local celebrity judges choose the winners. Please note, the Museum is adding a new "non-competitive" category this year.

All students and adults who would like to register to participate in the chalk art competition should do so by April 13, 2012. Please contact edsecy@mmfa.org or visit mmfa.org for an application. Interested in sponsoring a chalk artist or team? Please contact anovak@mmfa.org or call 334.240.4362 for more information.

---

# art AUCTION 2012

### **Silent Auction - Thursday, February 23**

6:30 P.M. till 9 P.M. | Business Attire

### **Live Auction - Saturday, February 25**

Cocktails 6 P.M.

Dinner and Live Auction 7:30 P.M.

Coat and Tie

Tickets for the Live Auction are \$150 per person.

This includes admission to the Silent Auction.

Tickets to the Silent Auction are \$50 per person.

Proceeds support the exhibitions, acquisitions,

and educational programs of the Montgomery

Museum of Fine Arts. **Call the Development**

**Office at 334.240.4333 to purchase your**

**tickets today.**

### **Steering Committee:**

Auction Chair

Lucy Jackson, Chair

Emilie Reid, Co-Chair

### **Art Selection**

Camille Elebash-Hill, Chair

Ginny Cumbus, Co-Chair

### **Auction Trips**

Benita Froemming

### **Decorations**

Eddie Scott, Chair

### **Printed Materials**

Melissa B. Tubbs, Chair

### **Treasurer**

Brenda Hellums, Chair

### **Invitations Committee**

Ashley White, Chair

Katrina Belt, Co-Chair

### **Logistics**

Lisa Capell, Chair

Katharine Harris, Co-Chair

## MEMBERSHIP

### MMFA ARTrip

#### Picasso to Warhol

Friday, April 20, 2012

More than 100 world-famous works of art have been assembled for the High Museum of Art from the collection of The Museum of Modern Art, New York. Join the MMFA as we explore Picasso, Matisse, Warhol and other legendary artists who redefined the idea of art. This exhibition features 14 20<sup>th</sup> century artists never before seen together in the southeast.

Look for details coming soon in the mail!

---

### Volunteer Recognition

On Tuesday, October 25 the MMFA held a reception honoring the volunteers who serve the Museum in so many ways. Their hard work and dedication are what make this institution a success. The volunteers enjoyed a tasty buffet in the Lowder Gallery and received one-of-a-kind, pen & ink magnets created by Melissa B. Tubbs. Many thanks again to all the volunteers for their constant support.

**The following volunteers were recognized for exceptional service:**

**Bazaar d'Art:** Jenny Thiessen

**Corporate Partner:** Larry Puckett Chevrolet

**ANTS:** Sheryl McCain

**First Impressions:** Weslene Smith

**Flimp:** Gloria Simons

**Rookie of the Year:** Leonard Schofield

**Intern of the Year:** Kristin McArthur

**Outstanding Contribution to Studio:** Betty Grate

**Outstanding Contribution to Outreach:** Beverly Bennett

**Outstanding Evening and Weekend Docent:** Beverly Lipton

**Wayne Barto Memorial Award:** Anne Presterl

**Pat Wanglie Award:** Liz Land

**100 Hour Club:** Jerry Atkinson, Beverly Bennett, Paula Branch, Katherine Danley, Betty Grate, George Jacobsen, Liz Land, Beverly Lipton, Pam Moulton, Anne Presterl, Julie Salley, Lou Scott, Gloria Simons, Carol Tew, Jenny Thiessen, Sheila Thomas, Lola Varner, Pat Wanglie, Ann Wells



# MEMBERSHIP

The Montgomery Museum of Fine Arts welcomes with pleasure all new members. This activity report is for the period of August 4, 2011 through October 28, 2011, An \* denotes an increase in membership.

## CORPORATE PARTNER

### Guarantor

Alabama Power Company  
Blue Cross Blue Shield of Alabama  
James W. Wilson, Jr. and Wynona W.  
Wilson Family Foundation

### Sponsor

Giles Enterprises, Inc.  
Harmon Dennis Bradshaw, Inc.  
Wachovia Wells Fargo Foundation

### Associate

River Bank and Trust  
Servis1st Bank  
Wal-Mart Stores, Inc.  
Whitney National Bank

## CORPORATE MEMBER

### Advocate

Beasley, Allen, Crow, Methvin, Portis &  
Miles, P.C.  
John Stanley & Associates, Inc.  
Wilson Price Barranco Blankenship

### Friend

Institute for Total Eye Care, P.C.  
Photography by the Robertsons  
STS Filing Products, Inc.

## DIRECTOR'S CIRCLE

### Distinguished Benefactor

Miss Elizabeth B. Crump  
Mr. and Mrs. Ferrell Patrick  
Mr. and Mrs. Charles A. Stakely

### Major Benefactor

Dr. Marla Wohlman and Mr. John G.  
Crews  
Mr. and Mrs. Barrie H. Harmon, III  
Mr. and Mrs. H. F. Jim Levy  
Mrs. James L. Loeb  
Mrs. Samuel L. Schloss  
Laurie Weil and Tommy Wool

### Benefactor

Mrs. Turner C. Cameron, Jr.  
Dr. and Mrs. Ben Cumbus  
Mr. and Mrs. Brooks L. Darby  
Dr. and Mrs. M. Bonner Engelhardt  
Mr. and Mrs. Herman B. Franco  
Dr. and Mrs. William D. Hughes  
Dr. and Mrs. Mark LeQuire  
Mr. and Mrs. James K. Lowder  
Mr. and Mrs. John H. Shannahan  
Mr. and Mrs. Adolph Weil, III  
Mr. and Mrs. Milton A. Wendland  
Mr. and Mrs. Irving Winter

## PATRON

### Sustaining

Alma Freeman  
Mr. Benjamin C. Stakely

### Supporting

Mr. and Mrs. K. C. Belt  
Mr. and Mrs. Ira Brounstein  
Dr. Richard L. Chambers  
Morris Dees/Susan Starr  
Mr. Ron Drinkard  
Mr. Renis Jones Jr.  
Mr. and Mrs. John D. Majors  
Mr. and Mrs. Tim McInnis  
Mr. and Mrs. R. Dean Parkman  
Mr. and Mrs. Nick Parnell  
Walter D. and Joan T. Phillips  
Mrs. Peter C. Robinson  
Mrs. Elizabeth N. Robison  
Mr. and Mrs. James Russell  
Dr. and Mrs. John Swan, II  
Dr. and Mrs. Michael Weinrib

### Subscribing

Roberta and Jerry Atkinson  
Dr. and Mrs. Jesse Austin  
Mr. and Mrs. Leon Capouano  
Mrs. Edith Davis  
Mr. Leo J. Drum, Jr.  
Ms. Darby Forrester  
Mr. and Mrs. Pete Ginsburg  
Ms. Elizabeth Kellum  
Anne D. King  
Dr. Valerie Lee  
Mr. and Mrs. Richard W. Miller  
Ms. Jane H. Mountcastle  
Mrs. William K. Nicrosi  
Mr. and Mrs. Robert F. Northcutt  
Dr. and Mrs. C. McGavock Porter  
Col. and Mrs. Lewis G. Simons  
Mr. and Mrs. Douglas Thiessen  
Drs. Thomas Vocino/Caroline Adams  
Mr. and Mrs. Stan Wilborn

## GENERAL MEMBERS

### Contributing

Mrs. Donald M. Bradburn  
Col. Nancy H. Buzard USAF (ret)  
Mr. and Mrs. George B. Clements  
Ms. Micky M. Davis  
Mr. Alan Edmiaston  
Mr. George Eischens  
Mr. Wilbur S. Hill  
Mr. and Mrs. Richard Hodges  
Mr. Cecil 'Doc' Holladay  
Mr. and Mrs. John Holloway  
Mr. and Mrs. Ken Isola  
Dr. and Mrs. Charles Karst, III  
Ms. Eve Loeb  
Mrs. Charlotte W. Mason  
Mrs. R. Ross McBryde  
Mrs. Bettie M. Miller

Mrs. Penelope Poitevint  
Dr. and Mrs. Joe L. Reed  
Mrs. Rita H. Sabel  
Mr. Ray Vaughan and Ms. Louise  
LaGrave

### Family/Dual

Louis and Daria Joy Anagnos  
Mr. and Mrs. Tom Andersen  
Mr. and Mrs. John C. Argo  
Mr. and Mrs. David Avant Sr.  
Mr. and Mrs. Narinder Bhalla  
Drs. Paul and Cynthia Bisbee  
Mr. and Mrs. John Bostwick  
Mr. and Mrs. Mark Bowlin  
Mr. and Mrs. Robert W. Bradford, Jr.  
Mr. Duane Brookhart  
Harold and Peggy Brown  
Mr. and Mrs. Ross S. Brown  
Dr. and Mrs. R. Harrell Bullard  
Mrs. Mary Boykin Bullard  
Mr. and Mrs. Sam Butner  
Mr. Joseph H. Campbell  
Mr. James M. Chastain  
Ms. Jennie Cochren  
Mr. and Mrs. Stephen Crotz  
Dr. Nancy L. Crumpton  
Mr. and Mrs. Benjamin Farrow  
Ms. Christine Freeman  
Mr. and Mrs. David Garcia  
Ms. Carol Grant  
Mr. Wade Hall  
Mr. and Mrs. W. Marks Harris  
Mr. and Mrs. Robert Herzfeld  
Mr. and Mrs. David Hoover  
Ms. Susan Hornsby  
Ms. Lucille D. Howard  
Mr. and Mrs. William C. Hutchinson  
Dr. and Mrs. Michael D. Irwin  
Mrs. Jennifer Johnke  
Mr. and Mrs. Steve Jones  
Mr. and Mrs. Burt Katz  
Mrs. and Mrs. Holmes King  
Ms. Alisa Koch  
Mr. William and Dr. Frances Kochan  
Ms. Angela Lee  
Justice and Mrs. James Main  
Connie and Gary S. Manoliu  
Drs. Susan McLaughlin & A. H. Rebar  
Ms. Rowena Nazareno  
Mr. Stan Neuenschwander  
Dr. and Mrs. Douglas O'Connor  
Mrs. Kirby Oiler  
Rev. and Mrs. Albert D. Perkins, III  
Mr. and Mrs. Ben E. Pool  
Sridevi Punna  
Ms. Quana Puwalowski  
Mr. and Mrs. Edward B. Raymon  
Mr. Don Reid and Dr. Kathleen  
Rasmussen  
Rev. and Mrs. David Saliba  
Mr. and Mrs. Philip Salley  
Mr. and Mrs. Cecil E. Scott  
Diane Seo  
Mr. and Mrs. Geoffrey Sherman

Ms. Jill Singleton  
 Dr. and Mrs. David A. Skier  
 Ms. Teresa Smith  
 Mr. and Mrs. Charles Strasburger  
 Mr. and Mrs. Ben Thomas  
 Mr. and Mrs. W. K. Upchurch, Jr.  
 Mr. and Mrs. Phillip L. Walp  
 Ming Wang  
 Mr. and Mrs. Nowell Thomas White  
 James and Susan Williams

#### Individual

Mr. Donald A. Ahern  
 Mrs. Lucille G. Banks  
 Ms. Alison Barnes  
 Mrs. Barbara Bell  
 Ms. Sharon Bell  
 Mrs. Lucinda Bollinger  
 Ms. Joyce Bomman  
 Ms. Pamela Bransford  
 Ms. Thelma P. Braswell  
 Ms. Elizabeth W. Britt  
 Ms. Edwina S. Campbell  
 Mrs. Gaby Capp  
 Mr. Robert T. Cargo  
 Mrs. Bernard Carmichael  
 Mrs. Emily Water Caruso  
 Lt. Col. Glenna L. Chandler  
 Ms. Edith D. Ciarletta  
 Ms. Jean Clark  
 Eleanor D. Connor  
 Miss Portis Cunningham  
 Ms. Mary Ann Darby  
 Ms. Linda Dean  
 Ms. Barbara DeMichels  
 Mrs. Connie Dickerson  
 Mrs. Joan R. Dilaura  
 Ms. Jehle Flowers  
 Ms. Nancy Forester  
 Ms. Donna Fountain  
 Mrs. Jean Goodwyn  
 Mrs. Brenda Hellums  
 Ms. Electra Henry  
 Mrs. Anne Minter High  
 Mrs. Betty Ann Key  
 Mrs. Ann Kirkland  
 Helen H. Kitchens  
 Ms. Betty B. Loeb

Ms. Sharon Maddox  
 Ms. Mary Lucy McDaniel  
 Ms. Nancy B. Mitchell  
 Ms. Judy B. Pate  
 Mrs. Doris Perry  
 Mrs. Helen L. Porter  
 Ms. Paula Reynolds  
 Ms. Karen Schmitt  
 Ms. Beverly Shaffer  
 Brian Swanner  
 Mr. George Taylor  
 Ms. Mary Lynn Thorington  
 Ms. Carol R. Toulmin  
 Mrs. H. R. Vaughan  
 Mrs. John W. Webb  
 Mrs. Patty Williams  
 Mrs. Betty Ziri

#### Masters

Mr. Stan Neuenschwander

#### Collectors Society

Mr. and Mrs. Neal Acker  
 Mr. and Mrs. Gregory B. Alford  
 Mr. Jeff Baker and Mrs. Connie Morrow  
 Mr. and Mrs. Bowen Ballard  
 Mr. and Mrs. K. C. Belt  
 Mr. and Mrs. Philip H. Butler  
 Mr. and Mrs. A. Sidney Coleman, Jr.  
 Mr. and Mrs. Thomas O. Coleman  
 Mrs. Charles Crook  
 Dr. and Mrs. Ben Cumbus  
 Mrs. Frances S. Durr  
 Mrs. Elizabeth T. Emmet  
 Ms. Nancy Forester  
 Dr. and Mrs. Lewis Gayden  
 Mrs. Jean Goodwyn  
 Ms. Emily D. Graham  
 Mr. and Mrs. Paul Hubbert  
 Anne D. King  
 Dr. and Mrs. William J. Knox, III  
 Dr. and Mrs. Mark LeQuire  
 Mrs. E. Milton Lewis  
 Mrs. James L. Loeb  
 Douglas Lowe  
 Mr. and Mrs. L. Daniel Morris, Jr.  
 Ms. Alice Novak  
 Dr. Karen W. Pirnie

Mr. and Mrs. Phillip O. Rawlings  
 Mr. and Mrs. Bruce S. Reid  
 Mrs. Peter C. Robinson  
 Ms. Adelia Turner  
 Ms. Glendora Turner  
 Mr. and Mrs. W. K. Upchurch, Jr.  
 Laurie Weil and Tommy Wool  
 Mr. and Mrs. Adolph Weil, III  
 Mrs. Helen Crump Wells  
 Dr. and Mrs. Barry L. Wilson  
 Mrs. Winston Wilson Reese

#### Gifts to the Acquisitions Fund

Miss Elizabeth B. Crump

#### Gifts of Art

Anonymous Donor  
 Joe Price and M. Lee Stone Fine Prints

#### Grants

Alabama State Council on the Arts  
 Target

#### Memorial/Tributes

In Memory of Mr. George Howard  
 Cohens Electronics & Appliances, Inc.

In Memory of Mr. James J. Krueger  
 Cohens Electronics & Appliances, Inc.

In Memory of Mr. Kirby Oiler  
 Ms. Pamela Bransford  
 Alice Carter  
 Mr. and Mrs. Mark M. Johnson  
 Mr. and Mrs. W. Hunter Lewis  
 Mr. and Mrs. Tom Morra  
 Cmdr. and Mrs. Eugene E. Wangle

#### Matching Gifts

Bank of America  
 Coca-Cola Enterprises Inc.

#### Individual Donations

Rev. and Mrs. Mark E. Waldo  
 Mr. Luther Waller, Jr.

#### Gifts In-Kind

Cmdr. and Mrs. Eugene E. Wangle

## Corporate Partners

The Montgomery Museum of Fine Arts is grateful to our corporate sponsors for their commitment to the mission of the Museum. Through their generosity, the Museum will continue to provide arts education and enrichment to Montgomery and surrounding communities. These companies have recently contributed substantially as Corporate Partners. Their generosity and leadership in giving are truly appreciated.



The Museum is also grateful to James W. Wilson, Jr. and Wyonna W. Wilson Family Foundation.

If you would like to discuss how you can support the MMFA, contact the development department at 334.240.4348 or email [jpope@mmfa.org](mailto:jpope@mmfa.org).

*Southern*  
A WRITERS' PROJECT World Premiere Play

# In the Book of...

"Warm, edgy and ultimately thought-provoking"

—Ed Kauffman, Hollywood Reporter

"Fresh and absorbing..." —Robert Faires, The Austin Chronicle

**January 5-22**

By John Walsh



# The 39 Steps

"Ingenious! A dizzy delight" —NY Daily News

"Riotous and Marvelous" —The New York Post

**Jan. 27-Feb. 7; April 22-May 19**

Adapted by Patrick Barlow From the novel by John Buchman From the movie of Alfred Hitchcock



# Travels with My Aunt

"Inventive, sparky, amusing...a lively evening."

"The show is terrific." —Daily Mail UK

**Feb. 3-7; April 22-May 19**

Adapted by Giles Havergal Based on Graham Greene's Novel



**ASF**

ALABAMA SHAKESPEARE FESTIVAL  
Montgomery, Alabama 1.800.841.4273 [www.ASF.net](http://www.ASF.net)



**Tuesday through Saturday**

**11 A.M. to 2 P.M.**

**334-240-4339**

For more information, call  
Tisha Rhodes at 334.240.4350  
or Amanda Wren at 334.240.4339

**Check out Café M's new blog**

@ <http://mmfacafe.blogspot.com>

We talk about new and fun recipes, fine  
wines, Café News and so much more.

**DiVine Lunch at Café M**

A partnership with United-Johnson Brothers LLC

Thursday, January 19th

11 A.M. and 2 P.M.

Featuring a delectable menu paired with  
selected wines

\$15 per person plus tax

*Reservations Recommended*

# Jazz Jams

Enjoy the Museum and a little  
jazz on a Sunday afternoon

**Don't Miss the Music!**  
from 2 to 4 P.M.  
Jan. 29th, Feb. 26th, March 18th,  
April 29th

*A partnership with Alabama Roots Music Society*

**Seating Limited | No Charge**



MMFA  
an  
*Inspired*  
atmosphere for  
*Special Events*

*A unique and sophisticated  
setting to showcase dreams.*

Tisha Rhodes  
*Events Coordinator*  
334.240.4350  
trhodes@mmfa.org

SPECIAL OFFERINGS

**MUSEUM  
STORE**

*Montgomery Museum of Fine Arts*



**Handcrafted**

Paintings, drawings, pottery, glass, textiles, baskets, and more!

Tuesday-Saturday 11 A.M.- 4 P.M. | Sunday Noon-4 P.M. | 334.240.4337

**ARTISTS IN ACTION**

Demonstrating Artist every first Wednesday and third Saturday of the month  
**Noon to 2 P.M.**

**Montgomery Museum of Fine Arts**

P.O. Box 230819  
Montgomery, AL 36123-0819

---

Non-Profit Org.  
U.S. Postage

**PAID**

Montgomery, AL  
Permit No. 101

---

# art AUCTION 2012

**Silent Auction - Thursday, February 23**

6:30 P.M. till 9 P.M.

**Live Auction - Saturday, February 25**

Cocktails 6:00 P.M. | Dinner and Live Auction 7:30 P.M.

Proceeds benefit the education, exhibition and acquisition programs of the Montgomery Museum of Fine Arts.  
Call the Development Office at 334.240.4333 for more information.



**STERLING BANK**

Publication of On Exhibit is made possible, in part, by **STERLING BANK**  
proudly supporting the arts in Montgomery.

---

**MMFA**

**ON EXHIBIT | WINTER 2012**

Published quarterly by the Montgomery Museum of Fine Arts  
Wynton M. Blount Cultural Park I | One Museum Drive  
Montgomery, Alabama 36117  
Phone: 334.240.4333  
Email: [museuminfo@mmfa.org](mailto:museuminfo@mmfa.org)

[www.mmfa.org](http://www.mmfa.org)

The Montgomery Museum of Fine Arts, a department of the City of Montgomery, is supported by funds from the City of Montgomery and the Montgomery Museum of Fine Arts Association. Programs are made possible, in part, by grants from the Alabama State Council on the Arts and the National Endowment for the Arts.

**FOLLOW US ON  
FACEBOOK!**

